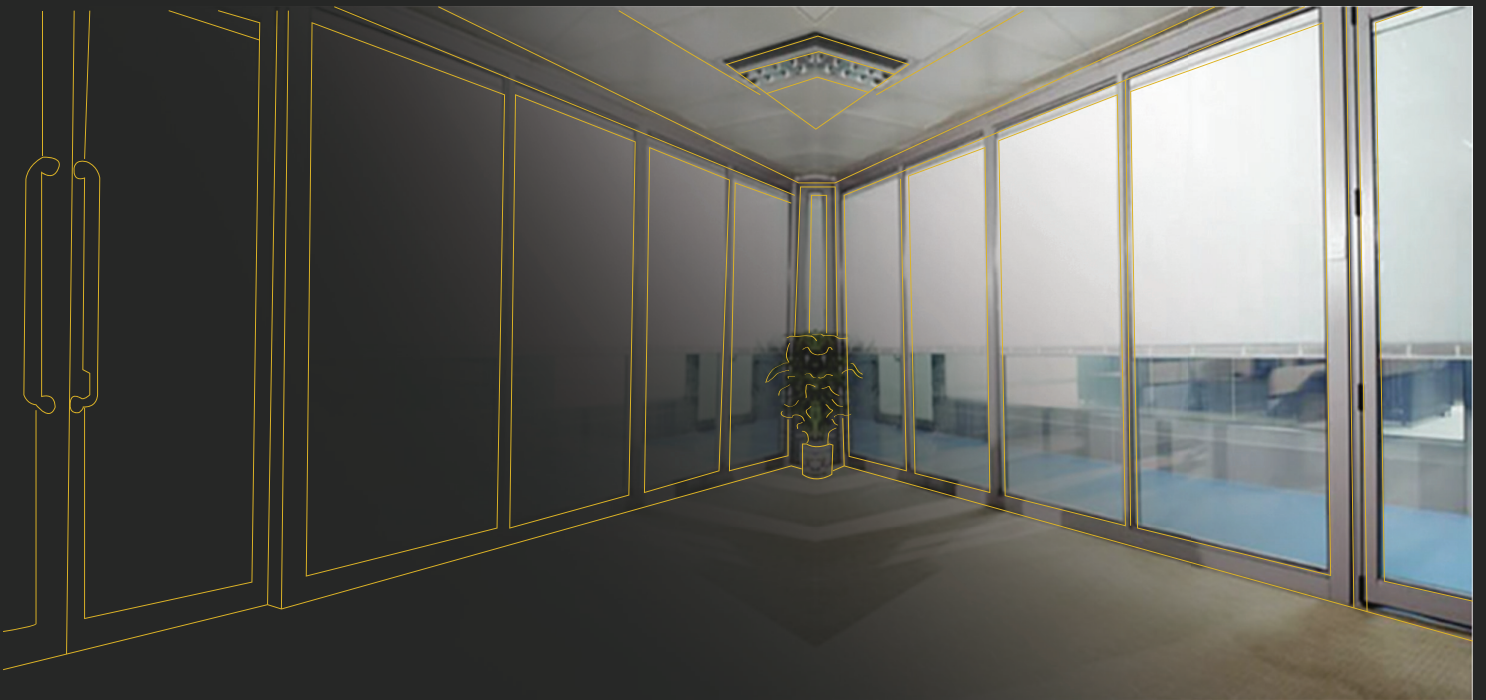


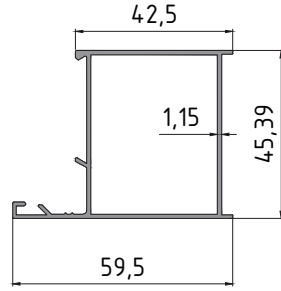


ALDOKS SERİSİ

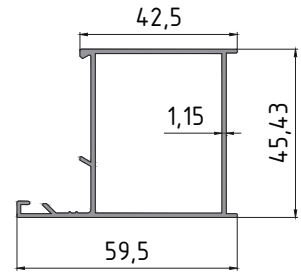
ALDOX SERIES



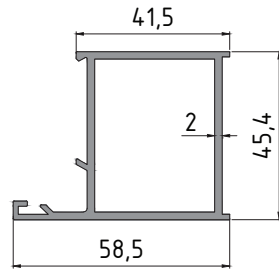
- 41-1946
- Kasa Profili /
Frame Profile
- 0.623 Kg/m



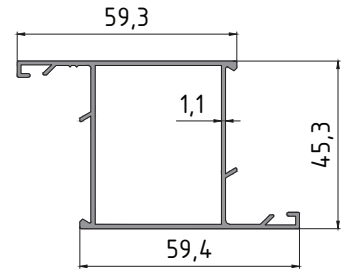
- 41-1988
- Kasa Profili /
Frame Profile
- 0.623 Kg/m



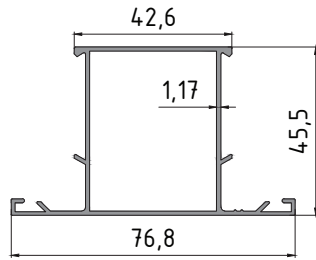
- 41-1964
- Kasa Profili /
Frame Profile
- 1.017 Kg/m



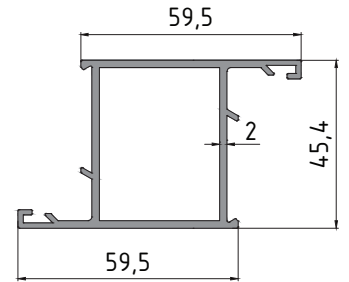
- 41-1989
- Kasa Profili /
Frame Profile
- 0.718 Kg/m



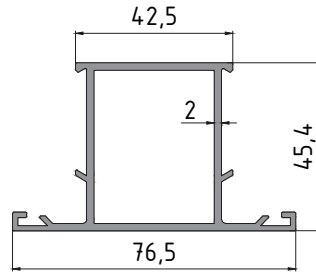
- 41-1990
- Kasa Profili /
Frame Profile
- 0.718 Kg/m



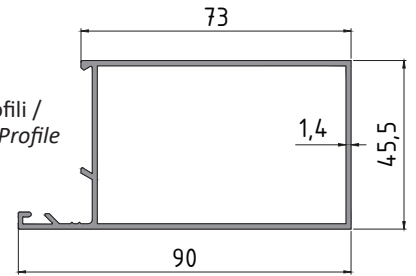
- 41-1962
- Kanat Profili /
Sash Profile
- 1.158 Kg/m



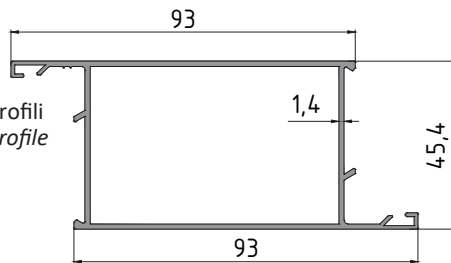
- 41-1963
- Orta Kayı Profili /
Transom Profile
- 1.158 Kg/m



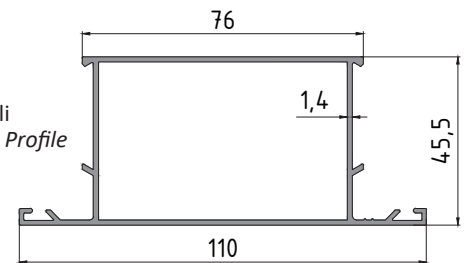
- 41-1956
- Baza Kasa Profili /
Plinth Frame Profile
- 0.989 Kg/m



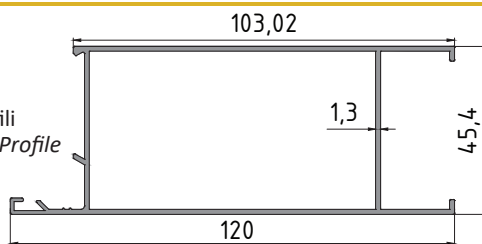
- 41-1955
- Baza Kanat Profili
Plinth Sash Profile
- 1.096 Kg/m



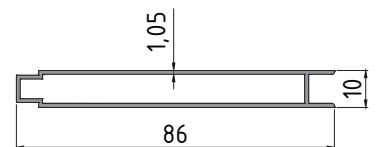
- 41-1957
- Baza Orta Profili
Plinth Transom Profile
- 1.122 Kg/m



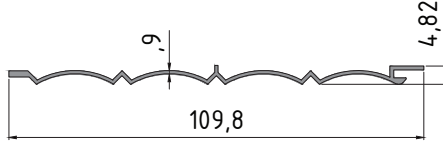
- 41-1947
- Baza Etek Profili
Plinth Bottom Profile
- 1.143 Kg/m



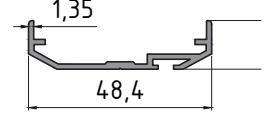
- 41-1954
- Lambiri Profili /
Wainscot Profile
- 0.534 Kg/m



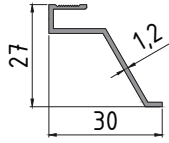
- 41-1979
- Lambiri Profili /
Wainscot Profile
- 0.331 Kg/m



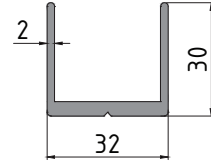
- 41-1976
- Çarpma Kapi Profili /
Swinging Door Profile
- 0.315 Kg/m



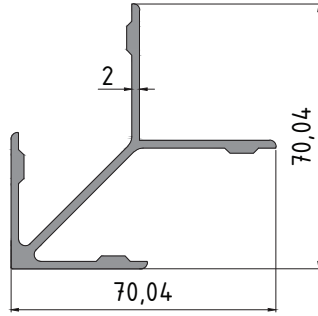
- 41-1984
- Damlalık / Drip
- 0.177 Kg/m



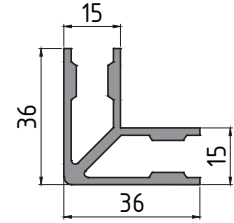
- 41-1953
- U Bağlantı Profili /
U Profile
- 0.608 Kg/m



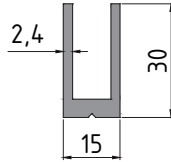
- 41-1950
- Köşe Bağlantı Profili /
Corner Cleats Profile
- 1.165 Kg/m



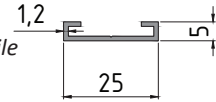
- 41-1951
- Köşe Bağlantı Profili /
Corner Cleats Profile
- 0.854 Kg/m



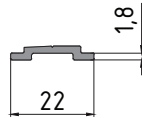
- 41-1952
- U Bağlantı Profili /
U Profile
- 0.520 Kg/m



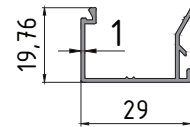
- 41-1982
- Dış Tij Profili /
Outside Pushing Rod Profile
- 0.127 Kg/m



- 41-1983
- İç Tij Profili /
Inside Pushing Rod Profile
- 0.127 Kg/m



- 41-1948
- Tek Cam Çita /
Single Glazing Beam
- 0.210 Kg/m



- 41-1949
- İki Cam Çita /
Double Glazing Beam
- 0.234 Kg/m

