



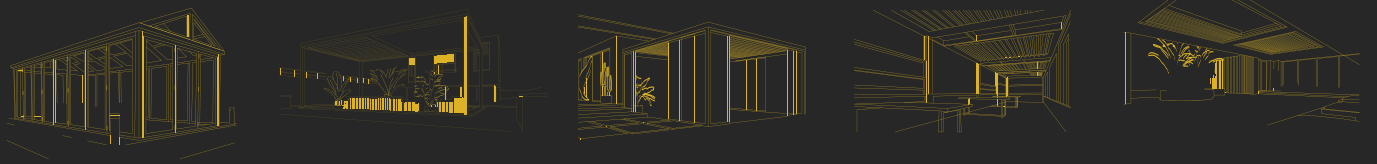
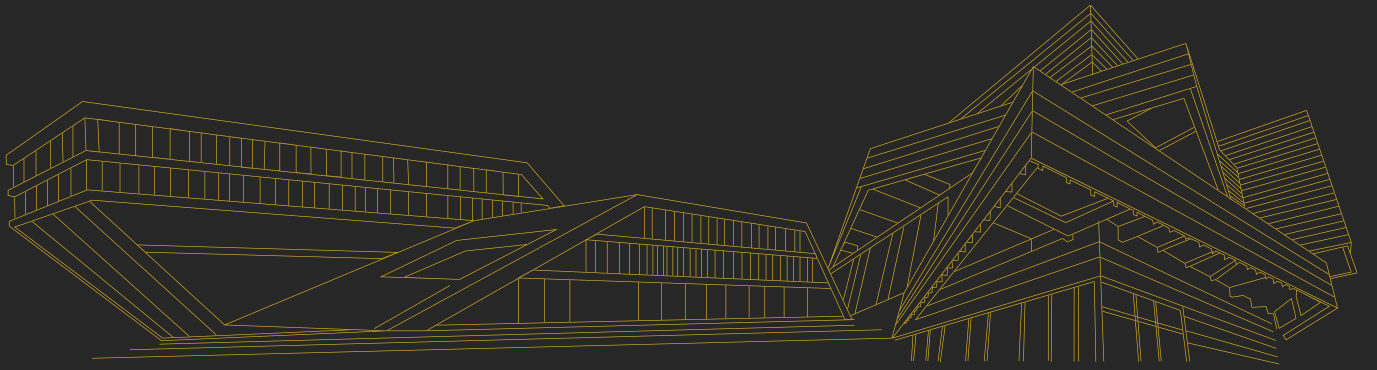
**NOR**  
ALÜMİNYUM

BEST  
OF  
THE  
BEST  
NOR

[www.noraluminyum.com.tr](http://www.noraluminyum.com.tr)

# GENEL PROFİL KATALOĞU GENERAL PROFILE CATALOG

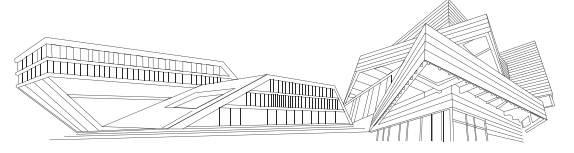




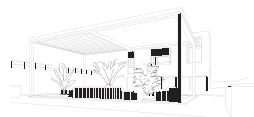
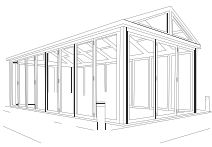
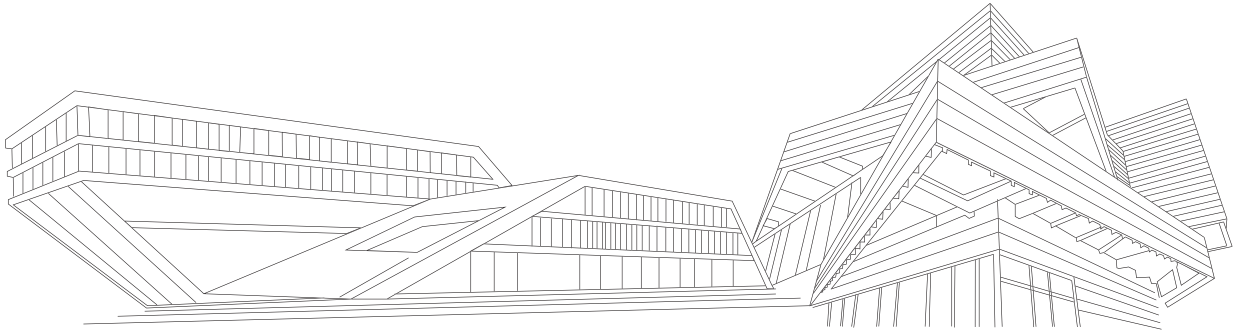
+90 549 502 03 30  
+90 552 863 37 13

info@noraluminyum.com.tr

Burhan Osb. Mah. 16. Cad. No: 3  
Akdeniz/MERSİN



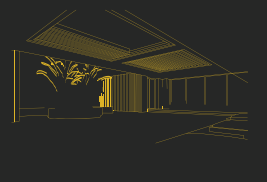
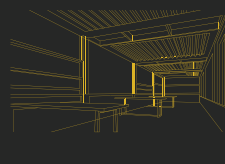
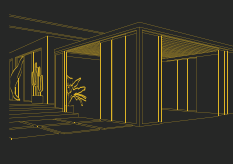
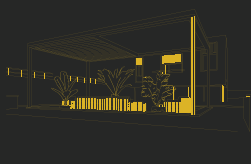
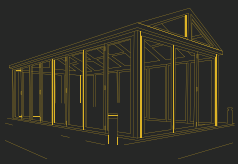
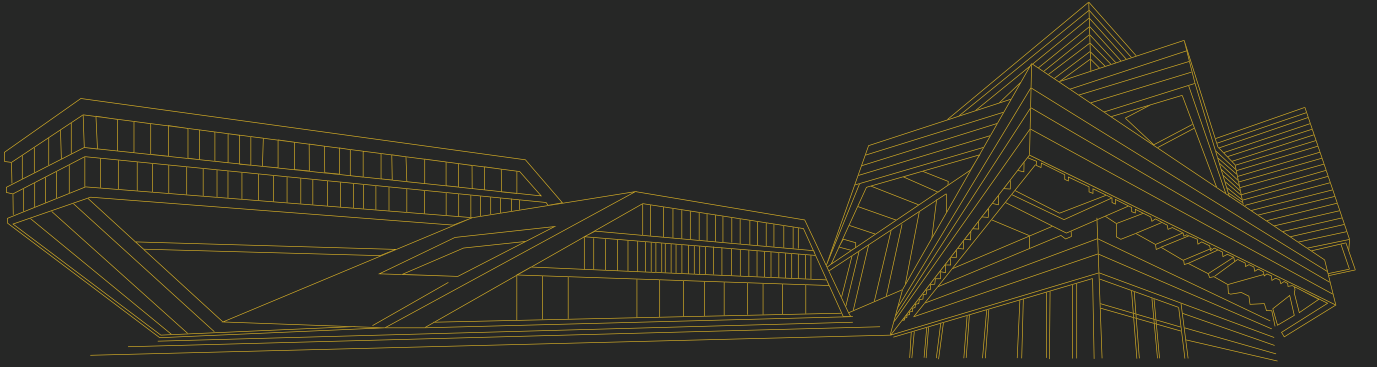
<b>SHINE MARS</b> PERGOLA	2, 5
<b>SHINE MERCURY</b> KIŞ BAHÇESİ / <i>WINTER GARDEN</i>	6, 13
<b>SHINE VENUS</b> BİOKLİMATİK PERGOLA / <i>BIOCLOMATIC PERGOLA</i>	14, 15
<b>SHINE NEPTUN</b> GİYOTİN / <i>GUILLOTINE</i>	16, 19
<b>SHINE SATURN</b> KATLANIR SÜRME / <i>PLIABLE SLIDING</i>	20, 23
SOLAR SİSTEM PROFİLLERİ / <i>SOLAR SYSTEM PROFILES</i>	24, 27
ALDOKS SERİSİ / <i>ALDOX SERIES</i>	28, 29
C60 SERİSİ / <i>C60 SERIES</i>	30, 31
SİGMA PROFİLLERİ / <i>SIGMA PROFILES</i>	32, 33
STANDART PROFİL / <i>STANDARD PROFIL</i>	34, 52










BEST  
OF  
THE  
BEST  
NOR

[www.noraluminyum.com.tr](http://www.noraluminyum.com.tr)



+90 549 502 03 30   
+90 552 863 37 13  

 [info@noraluminyum.com.tr](mailto:info@noraluminyum.com.tr)

 Burhan Osb. Mah. 16. Cad. No: 3  
Akdeniz/MERSİN

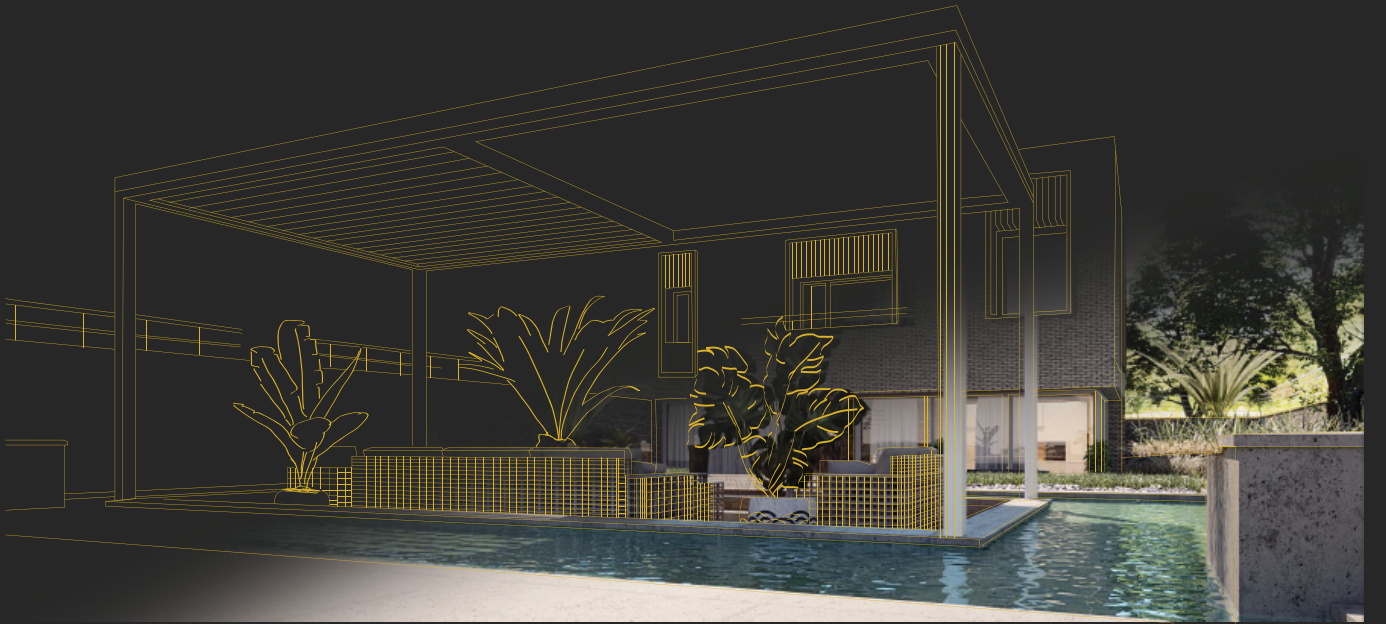


BEST  
OF  
THE  
BEST  
NOR

[www.noraluminyum.com.tr](http://www.noraluminyum.com.tr)

SHINE  
MARS

PERGOLA



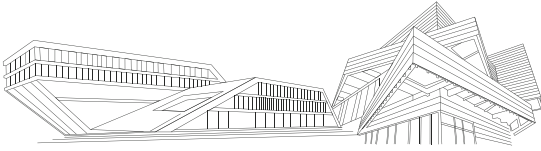
+90 549 502 03 30  
+90 552 863 37 13



[info@noraluminyum.com.tr](mailto:info@noraluminyum.com.tr)



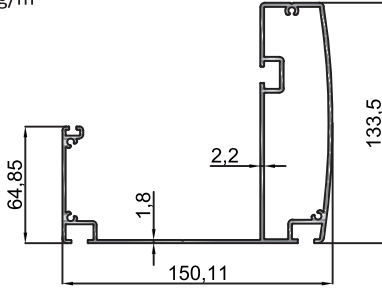
Burhan Osb. Mah. 16. Cad. No: 3  
Akdeniz/MERSİN



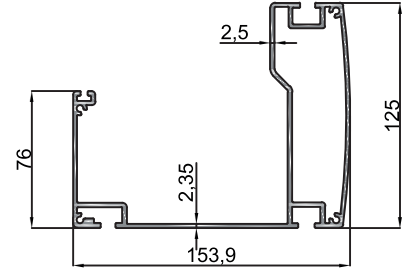
## PERGOLA SİSTEMİ - PERGOLA SYSTEM



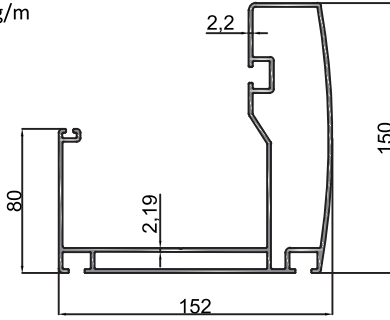
- 10-10415
- Oluk Profili/Gutter Profile
- 3.383 kg/m



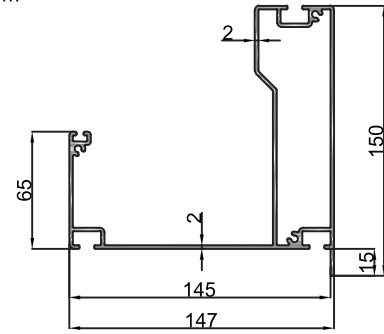
- 10-10468
- Oluk Profili/Gutter Profile
- 4.006 kg/m



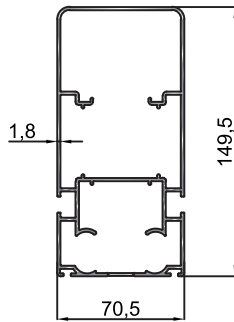
- 10-10477
- Oluk Profili/Gutter Profile
- 4.397 kg/m



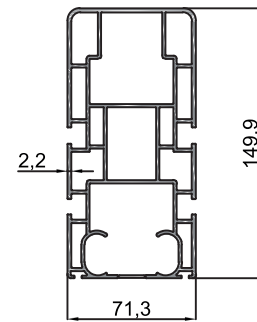
- 10-10512
- Oluk Profili/Gutter Profile
- 3.477 kg/m



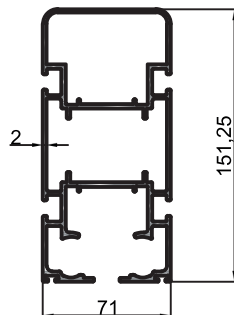
- 10-10412
- 70x150 mm Ray Profili/ 70x150 mm Rail Profile
- 3.094 kg/m



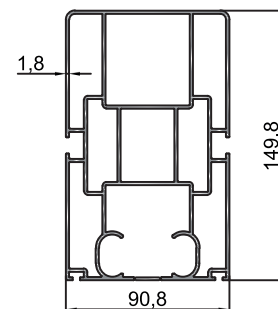
- 10-10413
- 70x150 mm Ray Profili/ 70x150 mm Rail Profile
- 4.994 kg/m



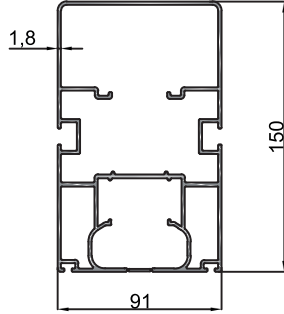
- 10-10469
- 70x150 mm Ray Profili/ 70x150 mm Rail Profile
- 4.196 kg/m



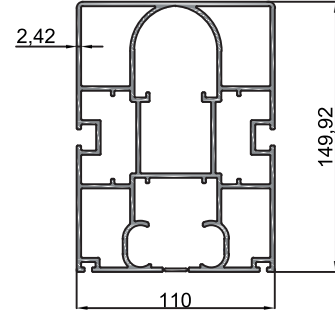
- 10-10411
- 90x150 Ray Profili/ 90x150 mm Rail Profile
- 5.114 kg/m



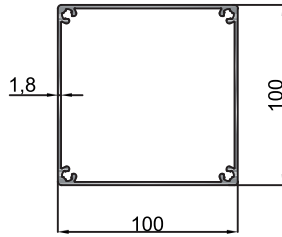
- 10-10501
- 90x150 Ray Profili/ 90x150 mm Rail Profile
- 4.129 kg/m



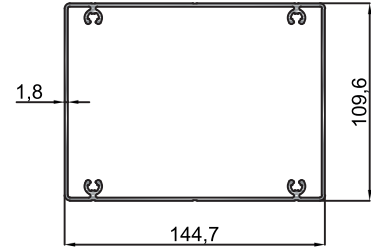
- 10-10475
- 110x150 mm Ray Profili/ 110x150 mm Rail Profile
- 7.170 kg/m



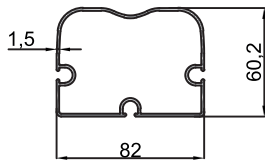
- 10-10414
- 100'lük Ayak Profili/ Counterfort Profile
- 2.227 kg/m



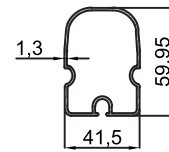
- 10-10419
- 144'lük Ayak Profili/ Counterfort Profile
- 2.927 kg/m



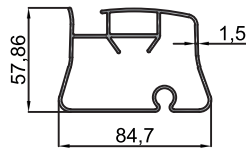
- 10-10416
- Kalın Korniş Profili/ Thick Stringcourse Profile
- 1.288 kg/m



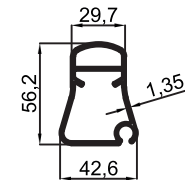
- 10-10418
- İnce Korniş Profili/ Thin Stringcourse Profile
- 0.737 kg/m



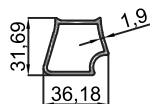
- 10-10472
- Kalın Korniş Profili/ Thick Stringcourse Profile
- 1.491 kg/m



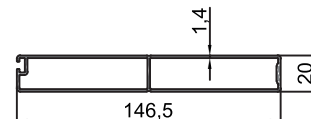
- 10-10471
- İnce Korniş Profili/ Thin Stringcourse Profile
- 0.809 kg/m

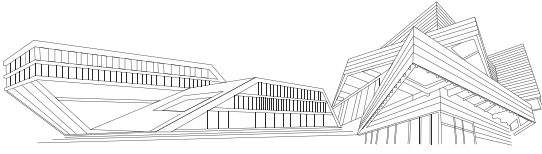


- 10-10470
- İnce Korniş Ek Profili/ Thin Stringcourse Joint Profile
- 0.590 kg/m



- 10-10420
- Orta Kayıt Profili/ Vertical Meeting Profile
- 1.355 kg/m

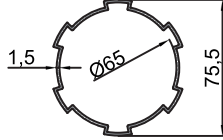




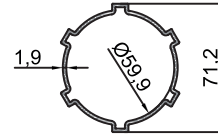
## PERGOLA SİSTEMİ - PERGOLA SYSTEM



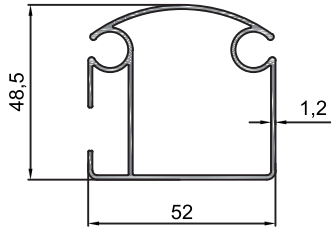
- 10-10417
- Tambur Boru Profili/Bull Block Tube Profile
- 1.071 kg/m



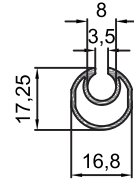
- 10-10467
- Tambur Boru Profili/Bull Block Tube Profile
- 1.213 kg/m



- 43-5209
- Korniş Profili/ Cornice Profile
- 0.791 kg/m



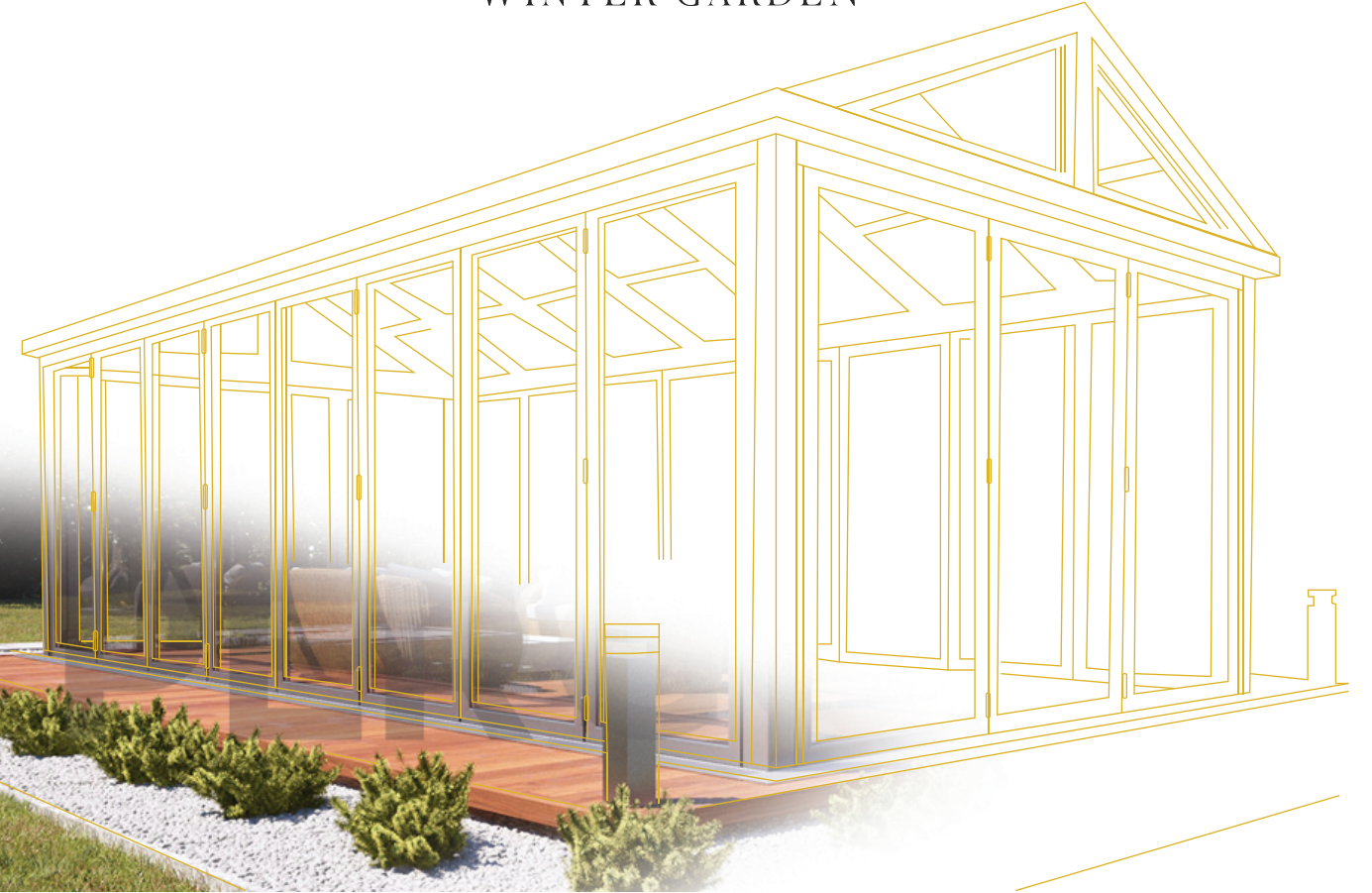
- 43-5211
- Korniş Profili/ Cornice Profile
- 0.214 kg/m

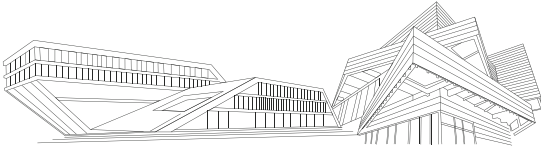




**SHINE**  
**MERCURY**

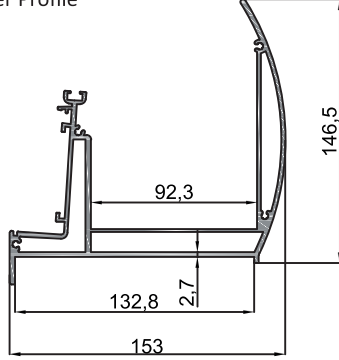
KIŞ BAHÇESİ  
WINTER GARDEN



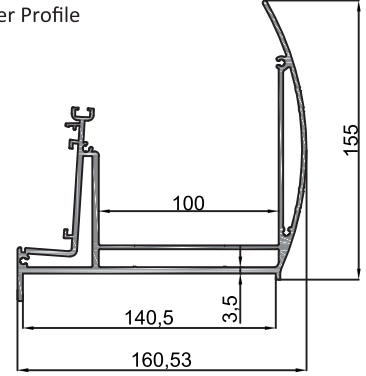


**KIŞ BAHÇESİ SİSTEMLERİ**  
**WINTER GARDEN SYSTEMS**

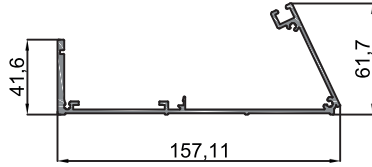
- 10-10094
- Oluk Profili / Gutter Profile
- 4.849 kg/m



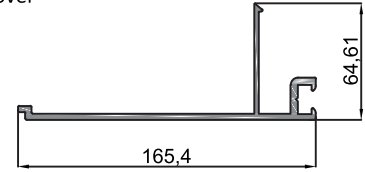
- 10-10281
- Oluk Profili / Gutter Profile
- 5.315 kg/m



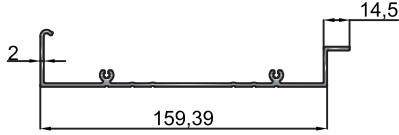
- 10-10093
- Duvar Profili / Wall Profile
- 1.942 kg/m



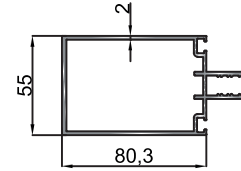
- 10-10285
- Duvar ve Oluk Profili İç Kapağı/Wall and Gutter Profile Inside Cover
- 0.577 kg/m



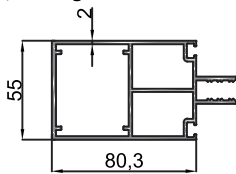
- 10-10284
- Oluk Profili Dış Kapağı/Gutter Profile Outside Cover
- 1.402 kg/m



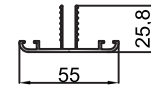
- 10-10097
- Polikarbon Taşıyıcı Profil/Polycarbonate Carrier Profile
- 1.851 kg/m



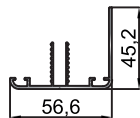
- 10-10098
- Cam Taşıyıcı Profil/Glazing Carrier Profile
- 2.265 kg/m



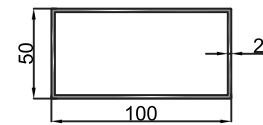
- 10-10099
- Taşıyıcı Profil Orta Kapağı / Carrier Profile Middle Cover
- 0,472 kg/m



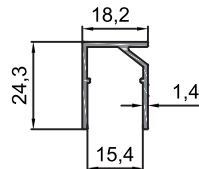
- 10-10100
- Taşıyıcı Profil Yan Kapağı / Carrier Profile Side Cover
- 0.659 kg/m



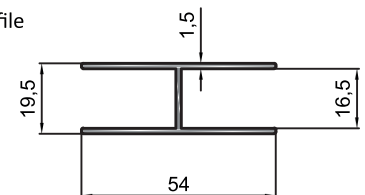
- 10-10101
- Kutu Profil / Rectangular Tube Profile
- 1.582 kg/m

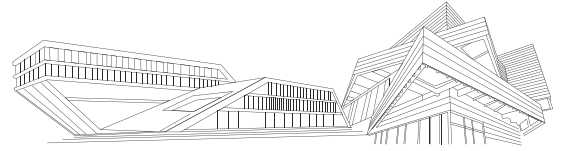


- 10-10091
- Polikarbon Kapama Çıtasa Profili/Polycarbonate Cover Strip Profile
- 0.252 kg/m



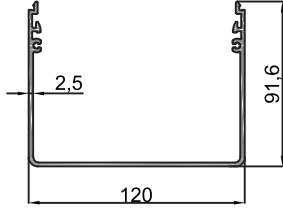
- 10-10090
- H Profil / H Profile
- 0.505 kg/m



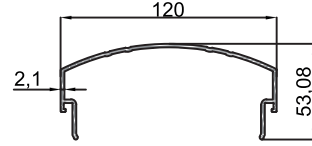


**KIŞ BAHÇESİ SİSTEMLERİ**  
**WINTER GARDEN SYSTEMS**

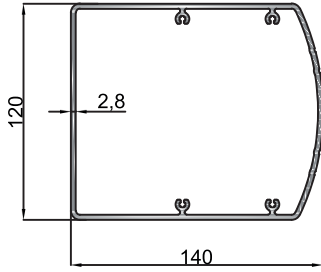
- 10-10095
- Ayak Profili / Counterfort Profile
- 2.046 kg/m



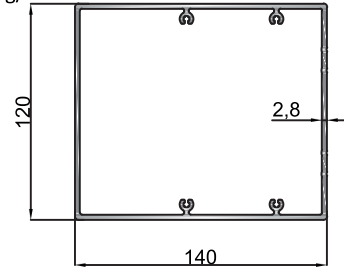
- 10-10096
- Ayak Kapak Profili / Counterfort Cover Profile
- 1.220 kg/m



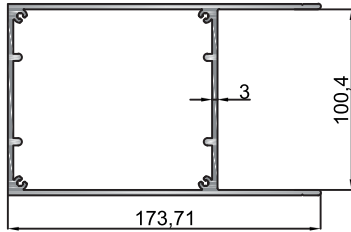
- 10-10282
- Ayak Profili / Counterfort Profile
- 4.038 kg/m

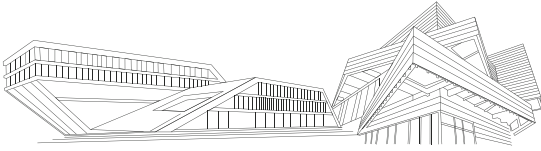


- 10-10283
- Ayak Profili / Counterfort Profile
- 4.237 kg/m



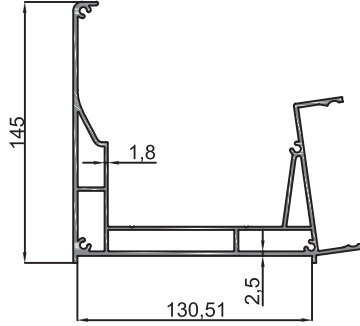
- 10-10291
- Duvar Destek Profili  
Wall Back Up Profile
- 4.996 kg/m



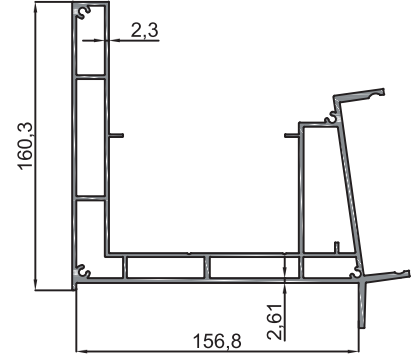


## KIŞ BAHÇESİ SİSTEMLERİ WINTER GARDEN SYSTEMS

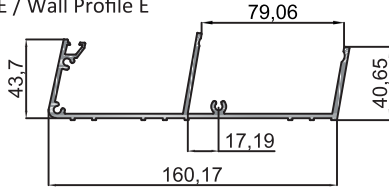
- 10-10522
- Oluk Profili E / Gutter Profile E
- 4.340 kg/m



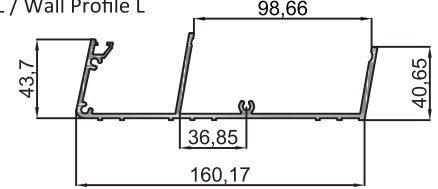
- Oluk Profili L / Gutter Profile L
- 6.780 kg/m



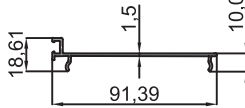
- 10-10537
- Duvar Profili E / Wall Profile E
- 2.250 kg/m



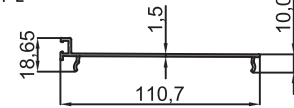
- 10-10528
- Duvar Profili L / Wall Profile L
- 2.252 kg/m



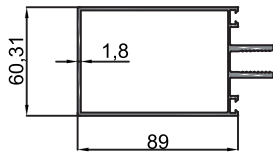
- 10-10536
- Duvar ve Oluk Profili İç Kapağı E / Wall and Gutter Profile Inside Cover E
- 0.506 kg/m



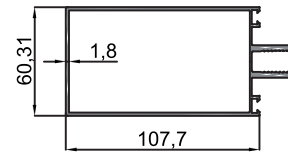
- 10-10529
- Duvar ve Oluk Profili İç Kapağı L / Wall and Gutter Profile Inside Cover L
- 0.585 kg/m



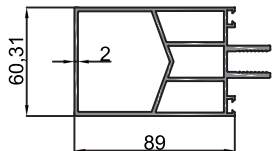
- 10-10535
- Polikarbon Taşıyıcı Profil E / Polycarbonate Carrier Profile E
- 1.782 kg/m



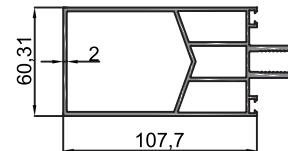
- 10-10525
- Polikarbon Taşıyıcı Profil L / Polycarbonate Carrier Profile L
- 1.965 kg/m



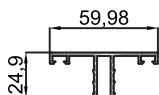
- 10-10534
- Cam Taşıyıcı Profil E / Glazing Carrier Profile E
- 2.691 kg/m



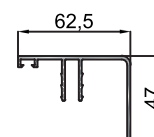
- 10-10524
- Cam Taşıyıcı Profil L / Glazing Carrier Profile L
- 2.914 kg/m

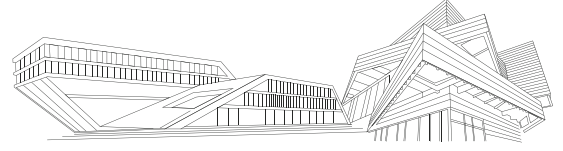


- 10-10526
- Taşıyıcı Profil Orta Kapağı E-L / Carrier Profile Middle Cover E-L
- 0.677 kg/m



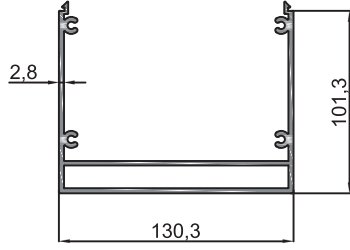
- 10-10527
- Taşıyıcı Profil Yan Kapağı E-L / Carrier Profile Side Cover E-L
- 0.870 kg/m



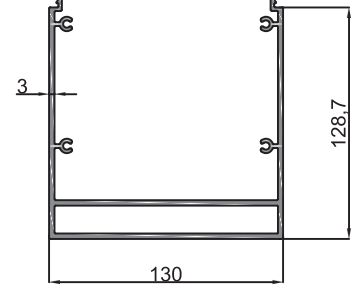


**KIŞ BAHÇESİ SİSTEMLERİ**  
**WINTER GARDEN SYSTEMS**

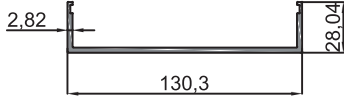
- 10-10523
- Ayak Profili E / Counterfort Profile E
- 3.901 kg/m



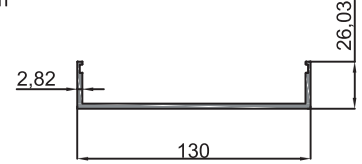
- 10-10542
- Ayak Profili L / Counterfort Profile L
- 4.608 kg/m

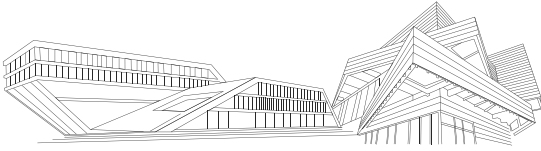


- 10-10532
- Ayak Kapak Profili E / Counterfort Cover Profile E
- 1.341 kg/m



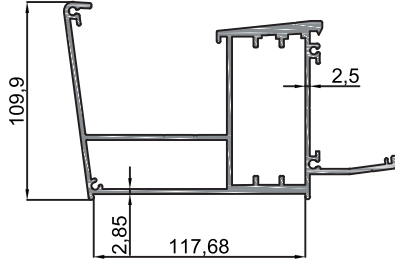
- 10-10538
- Ayak Kapak Profili L / Counterfort Cover Profile L
- 1.312 kg/m



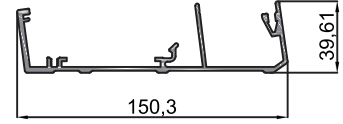


**KIŞ BAHÇESİ SİSTEMLERİ**  
**WINTER GARDEN SYSTEMS**

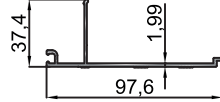
- 10-10057
- Oluk Profili / Gutter Profile
- 5.704 kg/m



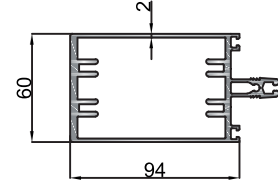
- 10-10059
- Duvar Profili / Wall Profile
- 1.983 kg/m



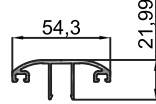
- 10-10060
- Duvar ve Oluk Profili Kapağı/Wall and Gutter Profile Cover
- 0.744 kg/m



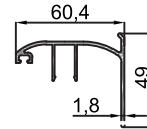
- 10-10058
- Taşıyıcı Profil/Carrier Profile
- 3.140 kg/m



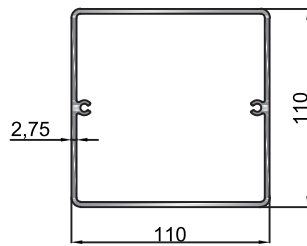
- 10-10062
- Taşıyıcı Profil Orta Kapağı / Carrier Profile Middle Cover
- 0.557 kg/m



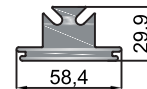
- 10-10061
- Taşıyıcı Profil Yan Kapağı / Carrier Profile Side Cover
- 0.754 kg/m

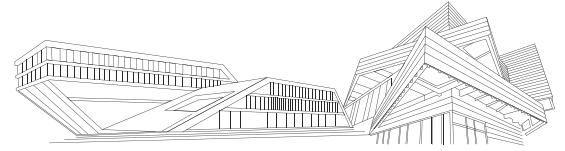


- 10-10103
- Ayak Profili / Counterfort Profile
- 3.352 kg/m



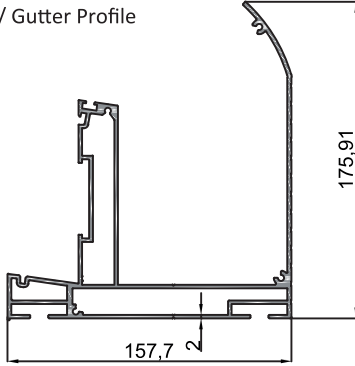
- 10-10102
- İç Bağlantı Profili/Internal Connecting Profile
- 2.481 kg/m



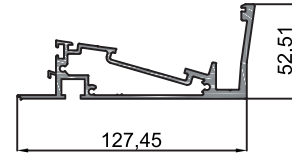


## KIŞ BAHÇESİ SİSTEMLERİ WINTER GARDEN SYSTEMS

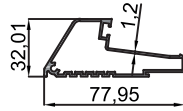
- 10-10448
- Oluk Profili / Gutter Profile
- 4.930 kg/m



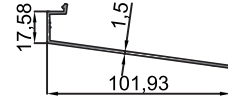
- 10-10450
- Duvar Profili / Wall Profile
- 2.572 kg/m



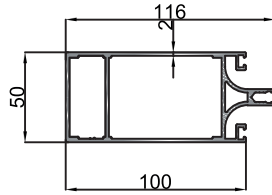
- 10-10454
- Duvar Baskı Profili / Wall Crush Profile
- 0.787 kg/m



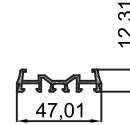
- 10-10455
- Oluk ve Duvar Profili Kapağı / Gutter and Wall Cover Profile
- 0.544 kg/m



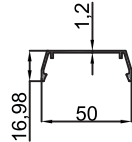
- 10-10451
- Cam Taşıyıcı Profil / Glazing Carrier Profile
- 2.362 kg/m



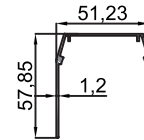
- 10-10452
- Cam Tutucu Profil / Glazing Stop Profile
- 0.436 kg/m



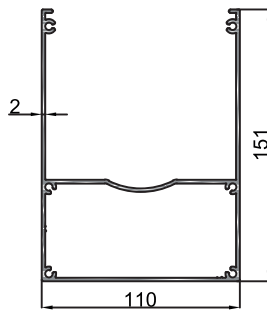
- 10-10456
- Cam Tutucu Orta Kapak Profili / Glazing Stop Middle Cover Profile
- 0.290 kg/m



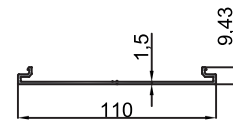
- 10-10457
- Cam Tutucu Yan Kapak Profili / Glazing Stop Side Cover Profile
- 0.436 kg/m



- 10-10453
- Ayak Profili / Counterfort Profile
- 3.117 kg/m



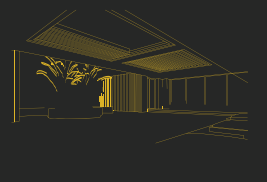
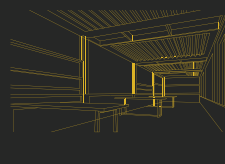
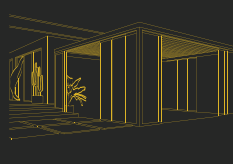
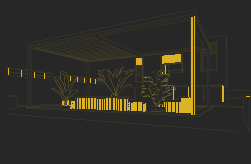
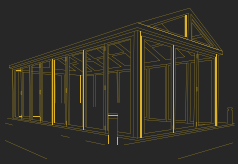
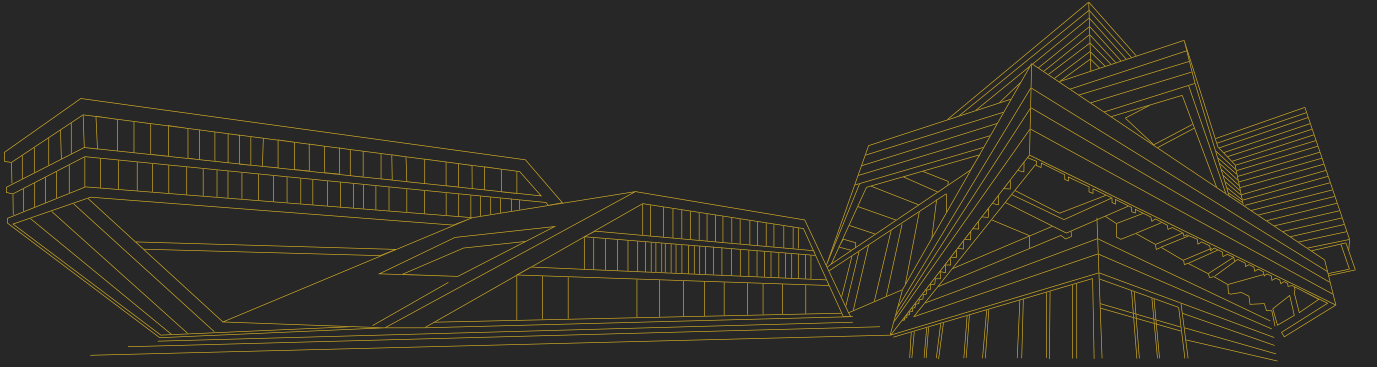
- 10-10449
- Ayak Kapak Profili / Counterfort Cover Profile
- 0.563 kg/m










BEST  
OF  
THE  
BEST  
NOR

[www.noraluminyum.com.tr](http://www.noraluminyum.com.tr)



+90 549 502 03 30   
+90 552 863 37 13  

 [info@noraluminyum.com.tr](mailto:info@noraluminyum.com.tr)

 Burhan Osb. Mah. 16. Cad. No: 3  
Akdeniz/MERSİN



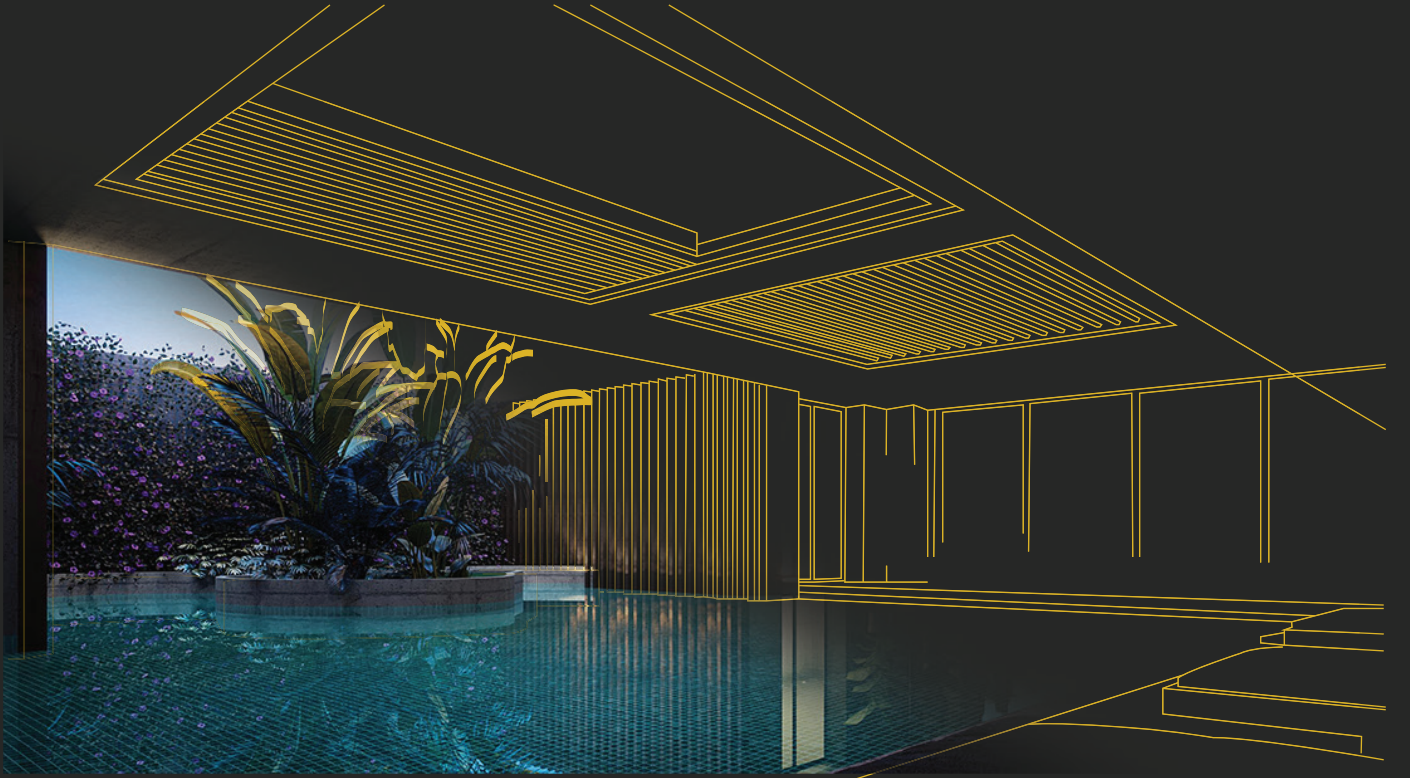


BEST  
OF  
THE  
BEST  
NOR

[www.noraluminyum.com.tr](http://www.noraluminyum.com.tr)

SHINE  
VENUS

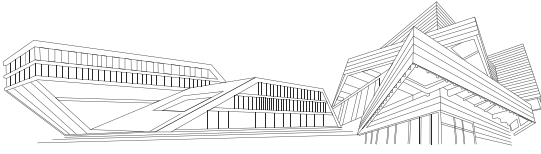
BIOKLİMATİK PERGOLA  
BIOCLOMATIC PERGOLA



+90 549 502 03 30  
+90 552 863 37 13

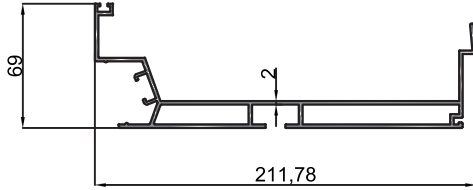
[info@noraluminyum.com.tr](mailto:info@noraluminyum.com.tr)

Burhan Osb. Mah. 16. Cad. No: 3  
Akdeniz/MERSİN

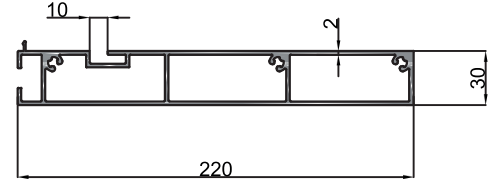


**BİOKLİMATİK PERGOLA SİSTEMİ**  
**BIOCLIMATIC PERGOLA SYSTEM**

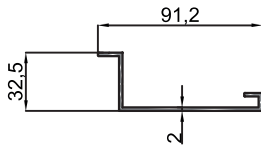
- 10-10911
- Alt Oluk Profili / Bottom Gutter Profile
- 3.015 kg/m



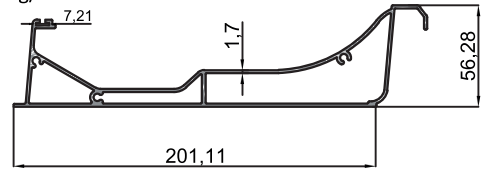
- 10-10910
- Yan Oluk Profili / Side Gutter Profile
- 3.562 kg/m



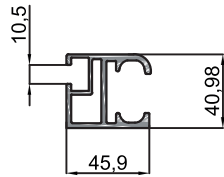
- 10-10909
- Oluk Ek Profili / Gutter Joint Profile
- 0.746 kg/m



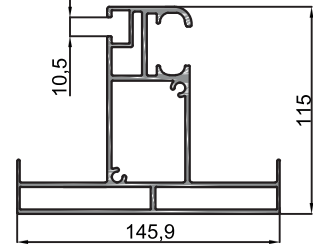
- 10-10921
- Panel Profili / Panel Profile
- 2.898 kg/m



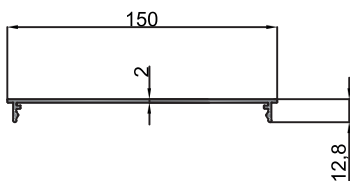
- 10-10974
- Hareketli Ray Profili / Moving Rail Profile
- 1.493 kg/m



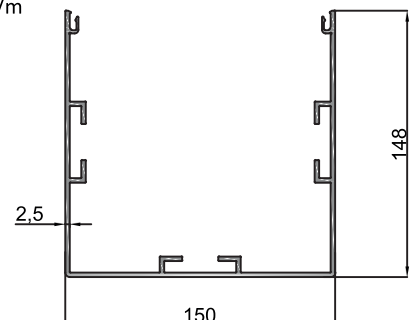
- 10-10943
- Sabit Ray Profili / Stable Rail Profile
- 4.578 kg/m



- 10-10941
- Ayak Kapak Profili / Counterfort Cover Profile
- 0.951 kg/m



- 10-10942
- Ayak Profili / Counterfort Profile
- 3.841 kg/m








BEST  
OF  
THE  
BEST  
NOR


[www.noraluminyum.com.tr](http://www.noraluminyum.com.tr)

SHINE  
NEPTUNE

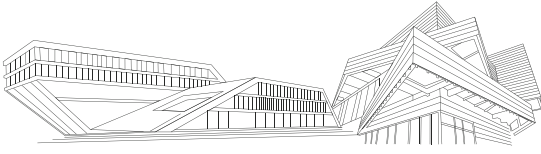
GIYOTİN  
GUILLOTINE



+90 549 502 03 30   
+90 552 863 37 13  

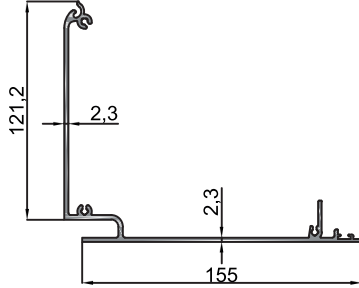
 [info@noraluminyum.com.tr](mailto:info@noraluminyum.com.tr)

 Burhan Osb. Mah. 16. Cad. No: 3  
Akdeniz/MERSİN

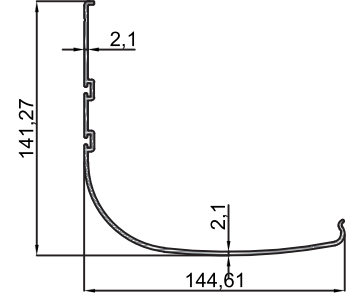


## GIYOTİN SİSTEMİ - GUILLOTINE SYSTEM

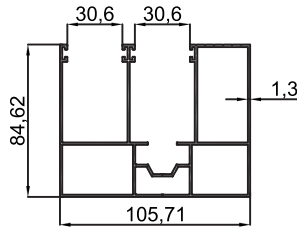
- 10-10378
- Ana Şase Profili (Sabit / Silinebilir)  
Main Chassis Profile ( Fixed / Wipeable )
- 2.353 kg/m



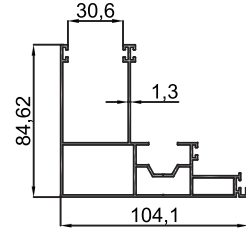
- 10-10381
- Şase Kapak Profili ( Sabit / Silinebilir )  
Chassis Cover Profile ( Fixed / Wipeable )
- 1.660 kg/m



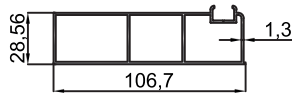
- 10-10379
- Silinebilir Yan Kasa Üst Profili / Wipeable Side Frame Top Profile
- 2.189 kg/m



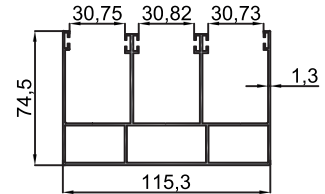
- 10-10380
- Silinebilir Yan Kasa Alt Profili / Wipeable Side Frame Bottom Profile
- 1.653 kg/m



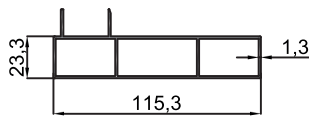
- 10-10382
- Silinebilir Alt Kasa Profili / Wipeable Bottom Frame Profile
- 1.168 kg/m



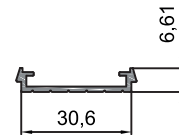
- 10-10392
- Sabit Yan Kasa Profili / Fixed Side Frame Profile
- 2.039 kg/m



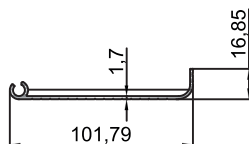
- 10-10393
- Sabit Alt Kasa Profili / Fixed Bottom Frame Profile
- 1.207 kg/m



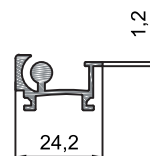
- 10-10461
- Silinebilir / Sabit Kasa Kapak Profili  
Wipeable / Fixed Frame Cover Profile
- 0.186 kg/m

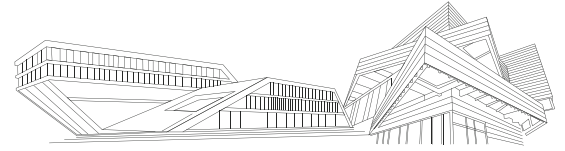


- 10-10389
- Silinebilir / Sabit Küşpeşte Profili  
Wipeable / Fixed Handrail Profile
- 0.580 kg/m



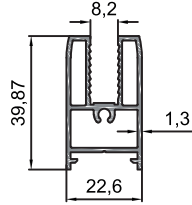
- 10-10390
- Silinebilir / Sabit Küşpeşte Bağlantı Profili  
Wipeable / Fixed Handrail Connection Profile
- 0.310 kg/m



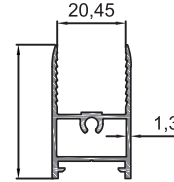


## GİYOTİN SİSTEMİ - GUILLOTINE SYSTEM

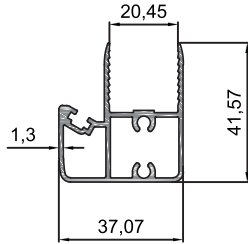
- 10-10386
- Silinebilir / Sabit Tek Cam Baza Profili  
Wipeable / Fixed Insulating Single Glazing Plinth Profile
- 0.635 kg/m



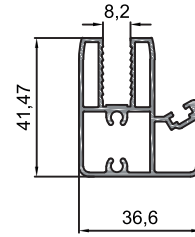
- 10-10384
- Silinebilir / Sabit Isıcam Baza Profili  
Wipeable / Fixed Insulating Heat Glazing Plinth Profile
- 0.493 kg/m



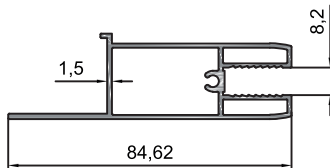
- 10-10385
- Silinebilir / Sabit Isıcam Kenet Profili  
Wipeable / Fixed Insulating Heat Glazing Clamp Profile
- 0.731 kg/m



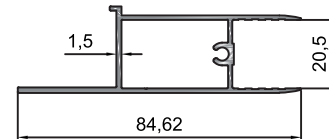
- 10-10387
- Silinebilir / Sabit Tek Cam Kenet Profili  
Wipeable / Fixed Insulating Single Glazing Clamp Profile
- 0.886 kg/m



- 10-10388
- Silinebilir Tek Cam Kulaklı Baza Profili  
Wipeable Single Glazing Ear Plinth Profile
- 0.885 kg/m



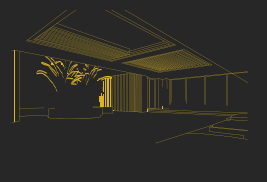
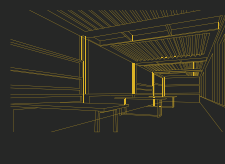
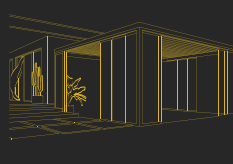
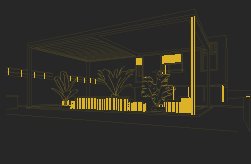
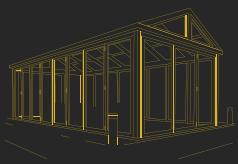
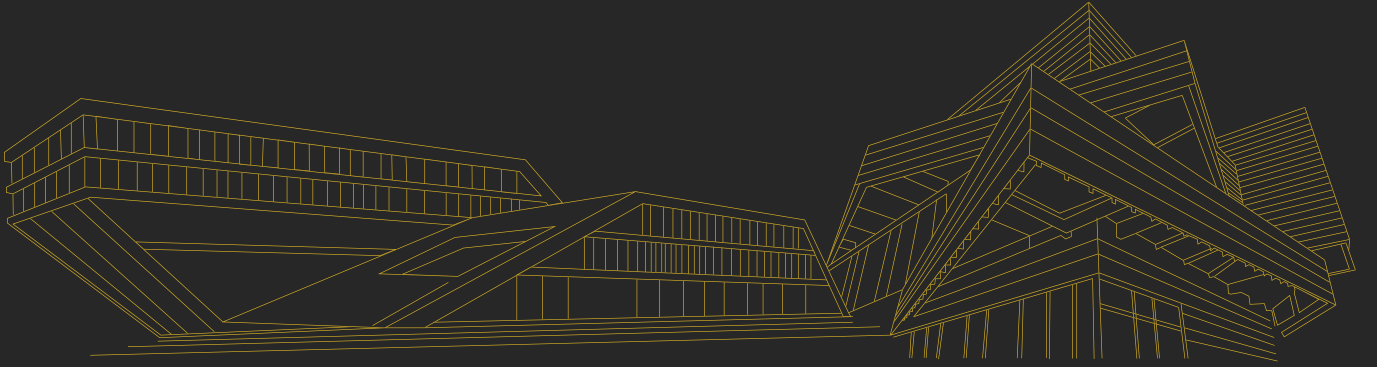
- 10-10383
- Silinebilir Isıcam Kulaklı Baza Profili  
Plinth Profile With Erasable Insulating Glazing Ears
- 0.716 kg/m










BEST  
OF  
THE  
BEST  
NOR

[www.noraluminyum.com.tr](http://www.noraluminyum.com.tr)



+90 549 502 03 30   
+90 552 863 37 13  

 [info@noraluminyum.com.tr](mailto:info@noraluminyum.com.tr)

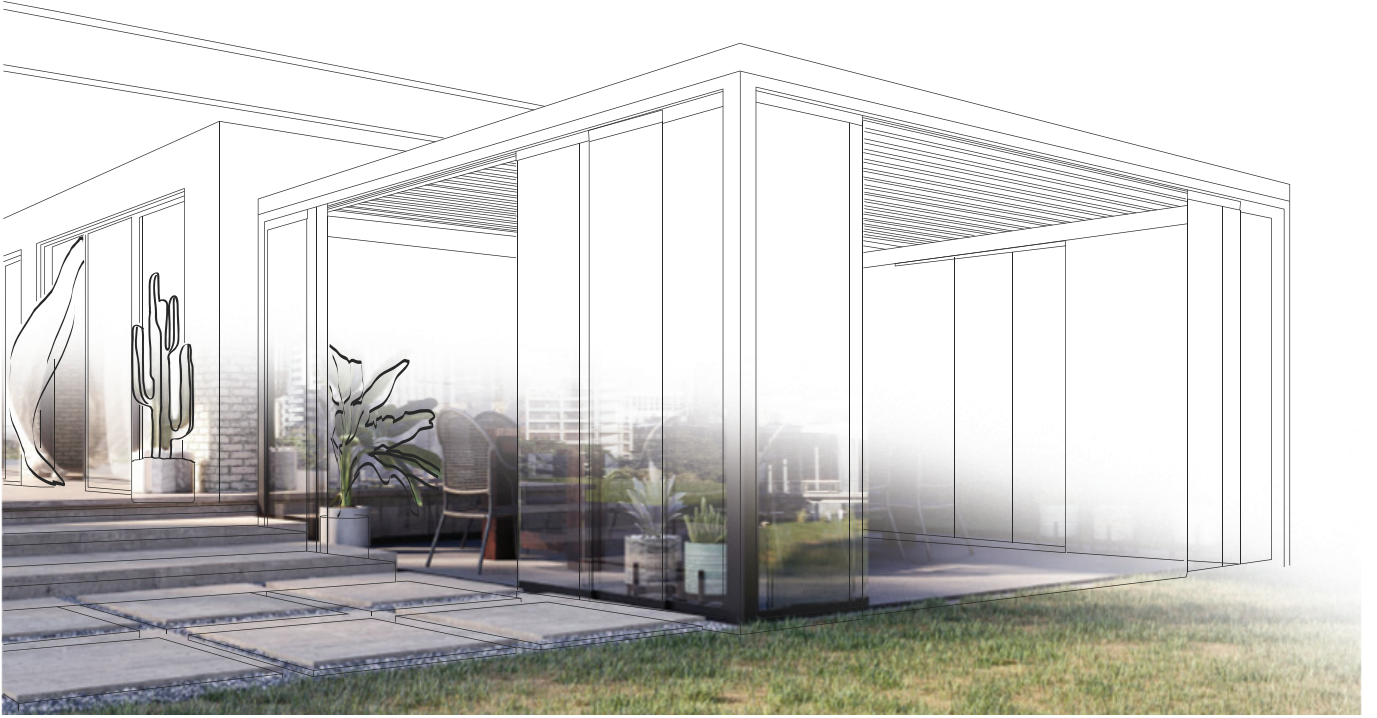
 Burhan Osb. Mah. 16. Cad. No: 3  
Akdeniz/MERSİN

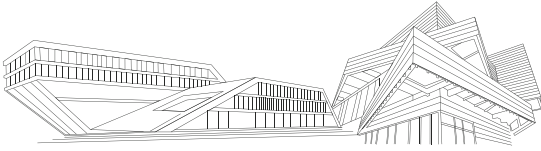


**SHINE**  
SATURN

## KATLANIR SÜRME

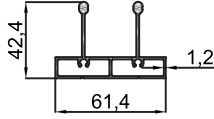
PLIABLE SLIDING



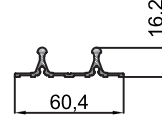


## KATLANIR SÜRME SİSTEMLERİ PLIABLE SLIDING SYSTEM

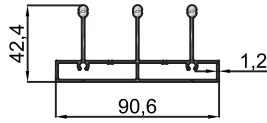
- 10-10407
- Eşikli 2'li Sürme Alt/Üst Kasa Profili  
2 Way Sliding Bottom/Top Frame Profile With Threshold
- 0.912 kg/m



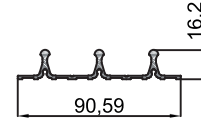
- 10-10410
- Eşiksiz 2'li Sürme Alt Kasa Profili  
2 Way Sliding Bottom Frame Profile Without Threshold
- 0.493 kg/m



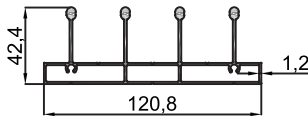
- 10-10406
- Eşikli 3'lü Sürme Alt/Üst Kasa Profili  
3 Way Sliding Bottom/Top Bottom Frame Profile With Threshold
- 1.288 kg/m



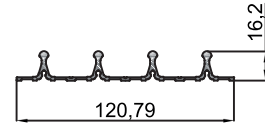
- 10-10409
- Eşiksiz 3'lü Sürme Alt Kasa Profili  
3 Way Sliding Bottom Frame Profile Without Threshold
- 0.728 kg/m



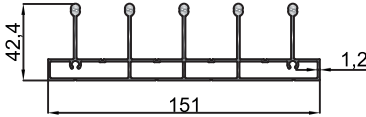
- 10-10405
- Eşikli 4'lü Sürme Alt/Üst Kasa Profili  
4 Way Sliding Bottom/Top Frame Profile With Threshold
- 1.685 kg/m



- 10-10408
- Eşiksiz 4'lü Sürme Alt Kasa Profili  
4 Way Sliding Bottom Frame Profile Without Threshold
- 0.970 kg/m



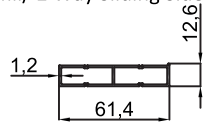
- 10-10494
- Eşikli 5'li Sürme Alt/Üst Kasa Profili  
5 Way Sliding Bottom/Top Frame Profile With Threshold
- 2.109 kg/m



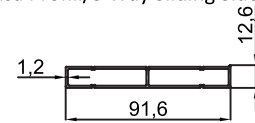
- 10-10492
- Eşiksiz 5'li Sürme Alt Kasa Profili  
5 Way Sliding Bottom Frame Profile Without Threshold
- 1.212 kg/m



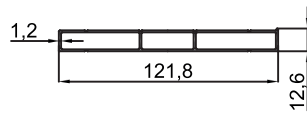
- 10-10404
- 2'li Sürme Yan Kasa Profili/ 2 Way Sliding Side Frame Profile
- 0.463 kg/m



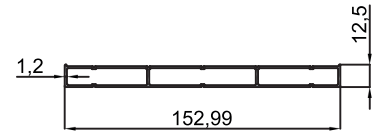
- 10-10403
- 3'lü Sürme Yan Kasa Profili/3 Way Sliding Side Frame Profile
- 0.646 kg/m



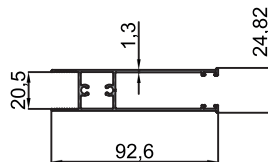
- 10-10402
- 4'lü Sürme Yan Kasa Profili/4 Way Sliding Side Frame Profile
- 0.843 kg/m



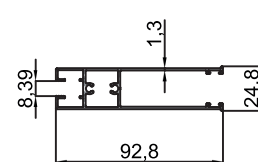
- 10-10493
- 5'li Sürme Yan Kasa Profili/5 Way Sliding Side Frame Profile
- 1.047 kg/m



- 10-10394
- Sürme Baza Kanat Profili (Isı Camlı)  
Sliding Plinth Wing Profile (Heat Glazing)
- 0.857 kg/m

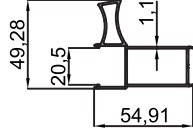


- 10-10395
- Sürme Baza Kanat Profili (Tek Camlı)  
Sliding Plinth Wing Profile (Single Glazed)
- 0.949 kg/m

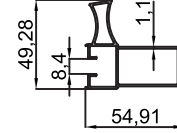




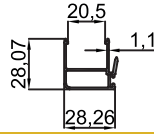
- 10-10396
- Sürme Yan Kanat Kollu Profili (Isı Camlı)  
Sliding Side Sash Arm Profile (Heat Glazed)
- 0.631 kg/m



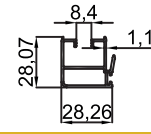
- 10-10397
- Sürme Yan Kanat Kollu Profili (Tek Camlı)  
Sliding Side Sash Arm Profile (Single Glazed)
- 0.686 kg/m



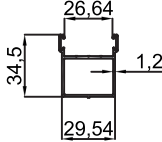
- 10-10398
- Sürme Yan Kenet Profili (Isı Camlı)  
Sliding Side Clamp Profile (Heat Glazed)
- 0.367 kg/m



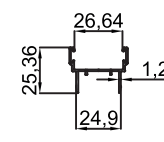
- 10-10399
- Sürme Yan Kenet Profili (Tek Cam)  
Sliding Side Clamp Profile (Single Glazing)
- 0.418 kg/m



- 10-10400
- Bitiş U Profili / Finish U Profile
- 0.441 kg/m



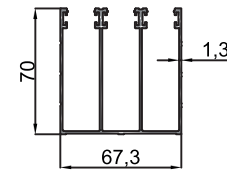
- 10-10401
- Ara H Profili / Distance H Profile
- 0.264 kg/m



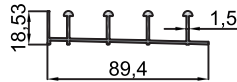
- 10-10309
- 3'lü Alt Ray Profili/ 3 Way Bottom Rail Profile
- 0.584 kg/m



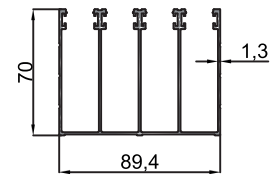
- 10-10310
- 3'lü Üst Kasa Profili/3 Way Top Frame Profile
- 1.466 kg/m



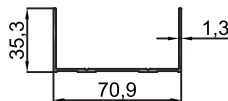
- 10-10304
- 4'lü Alt Ray Profili/4 Way Bottom Rail Profile
- 0.762 kg/m



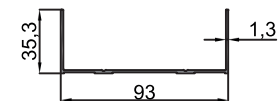
- 10-10305
- 4'lü Üst Kasa Profili/4 Way Top Frame Profile
- 1.874 kg/m



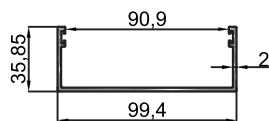
- 10-10311
- 3'lü Yan Kasa Profili/3 Way Side Frame Profile
- 0.513 kg/m



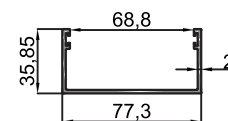
- 10-10306
- 4'lü Yan Kasa Profili/4 Way Side Frame Profile
- 0.591 kg/m



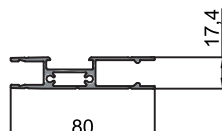
- 10-10543
- Yan Kasa Profili/Side Frame Profile
- 0.972 kg/m



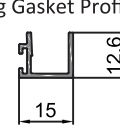
- 10-10544
- Yan Kasa Profili/Side Frame Profile
- 0.852 kg/m



- 10-10308
- Baza Profili / Plinth Profile
- 0.947 kg/m



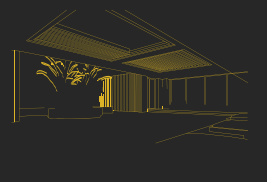
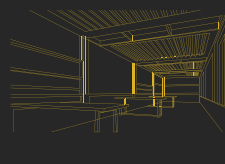
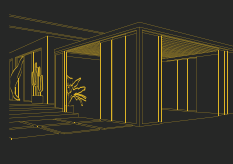
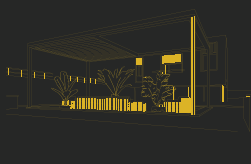
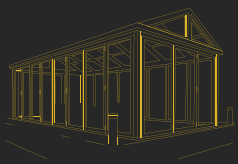
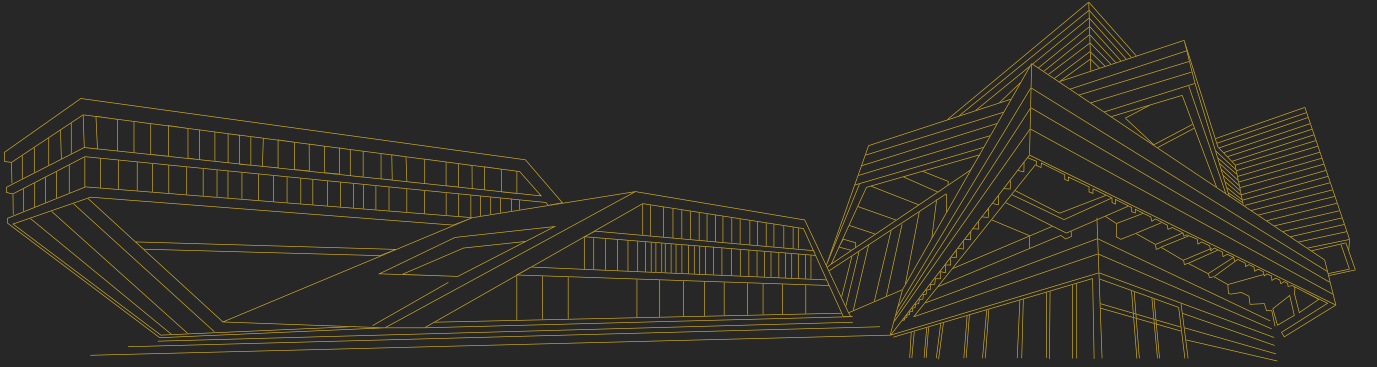
- 10-10307
- Ara Fitol Profili / Footing Gasket Profile
- 0.139 kg/m










BEST  
OF  
THE  
BEST  
NOR

[www.noraluminyum.com.tr](http://www.noraluminyum.com.tr)



+90 549 502 03 30   
+90 552 863 37 13  

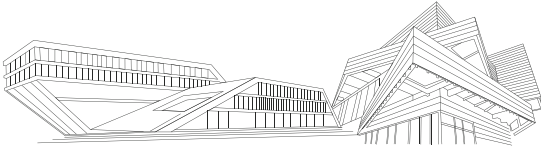
 [info@noraluminyum.com.tr](mailto:info@noraluminyum.com.tr)

 Burhan Osb. Mah. 16. Cad. No: 3  
Akdeniz/MERSİN

# SOLAR SİSTEM PROFİLLERİ

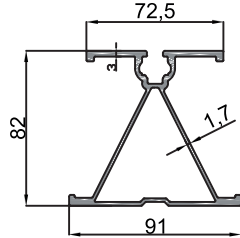
## SOLAR SYSTEM PROFILES



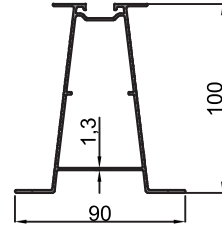


**SOLAR SİSTEM PROFİLLERİ**  
**SOLAR SYSTEM PROFILES**

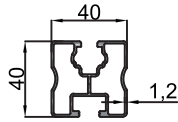
- 35-5312
- Solar Enerji Ray Profili / Solar Energy Rail Profile
- 2.208 kg/m



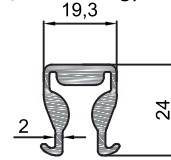
- 35-5359
- Solar Enerji Ray Profili / Solar Energy Rail Profile
- 1.310 kg/m



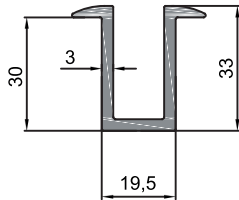
- 35-5303
- Solar Enerji Ray Profili / Solar Energy Rail Profile
- 0.812 kg/m



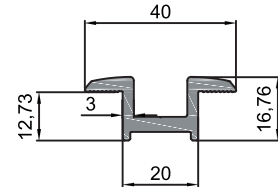
- 35-5360
- Solar Enerji Bağlantı Profili / Solar Energy Connection Profile
- 0.614 kg/m



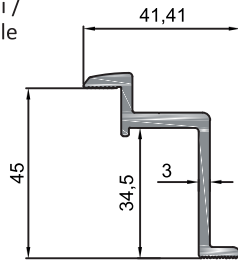
- 35-5309
- Solar Enerji Orta Bağlantı Profili / Solar Energy Middle Connection Profile
- 0.743 kg/m



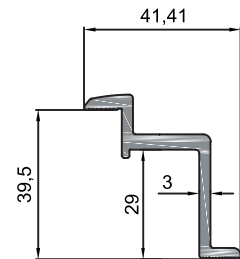
- 35-5361
- Solar Enerji Orta Bağlantı Profili / Solar Energy Middle Connection Profile
- 0.576 kg/m



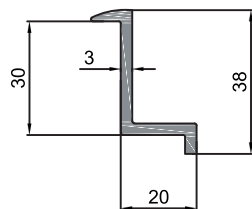
- 35-5362
- Solar Enerji Bitiş Profili / Solar Energy End Profile
- 0.770 kg/m



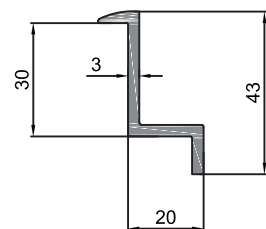
- 35-5363
- Solar Enerji Bitiş Profili / Solar Energy End Profile
- 0.725 kg/m

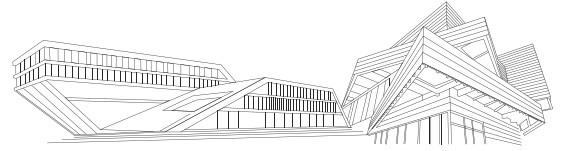


- 35-5310
- Solar Enerji Bitiş Profili / Solar Energy End Profile
- 0.494 kg/m



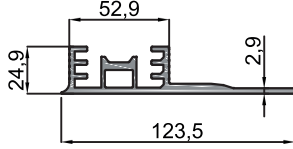
- 35-5311
- Solar Enerji Bitiş Profili / Solar Energy End Profile
- 0.535 kg/m



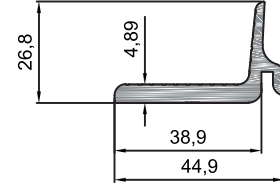


## SOLAR SİSTEM PROFİLLERİ SOLAR SYSTEM PROFILES

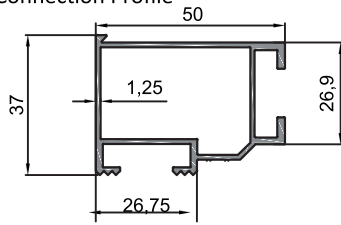
- 35-5368
- Kiremit Çatı Ray Profili/Tile Roof Rail Profile
- 2.174 kg/m



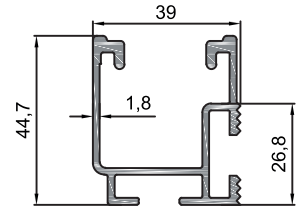
- 35-5367
- Kiremit Çatı Kelepçe Profili/  
Tile Roof Clamp Profile
- 0.760 kg/m



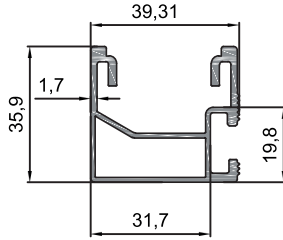
- 35-5382
- Kiremit Çatı Panel Bağlantı Profili /  
Tile Roof Panel Connection Profile
- 0.710 kg/m



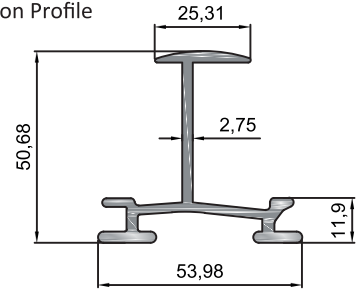
- 35-5383
- Kiremit Çatı Panel Bağlantı Profili /  
Tile Roof Panel Connection Profile
- 0.956 kg/m



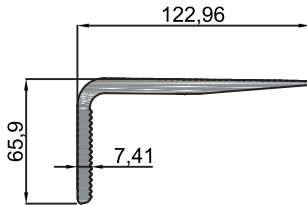
- 35-5385
- Kiremit Çatı Panel Bağlantı Profili/  
Tile Roof Panel Connection Profile
- 0.767 kg/m



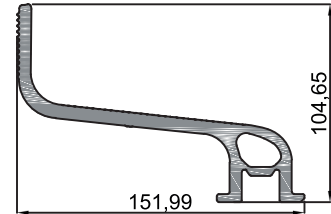
- 35-5384
- Kiremit Çatı Bağlantı Profili/  
Tile Roof Connection Profile
- 1.084 kg/m



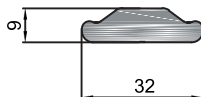
- 35-5365
- Kiremit Çatı Üst Kasa Profili/  
Tile Roof Top Frame Profile
- 3.131 kg/m



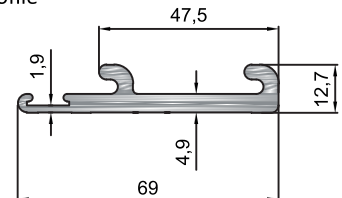
- 35-5366
- Kiremit Çatı Alt Kasa Profili /  
Tile Roof Bottom Frame Profile
- 5.041 kg/m



- 35-5364
- Kiremit Çatı İç Bağlantı Profili/  
Tile Roof Internal Connection Profile
- 0.623 kg/m



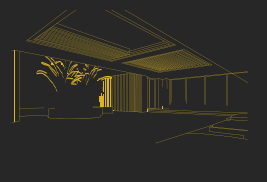
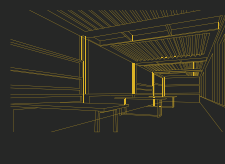
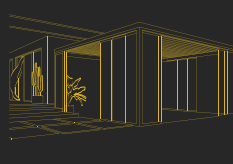
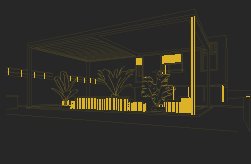
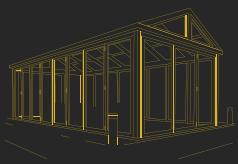
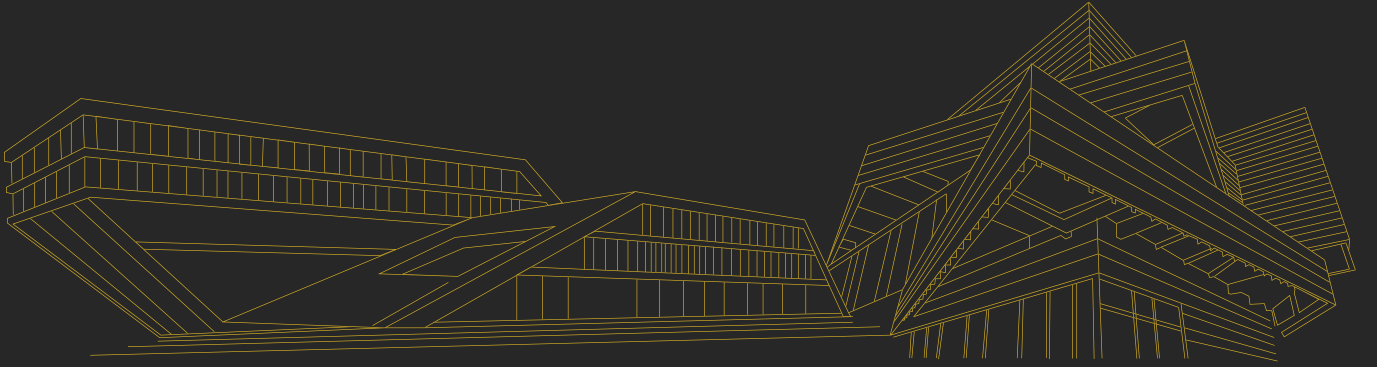
- 35-5355
- Kiremit Çatı Kancası Profili/  
Tile Roof Hook Profile
- 1.078 kg/m










BEST  
OF  
THE  
BEST  
NOR

[www.noraluminyum.com.tr](http://www.noraluminyum.com.tr)



+90 549 502 03 30   
+90 552 863 37 13  

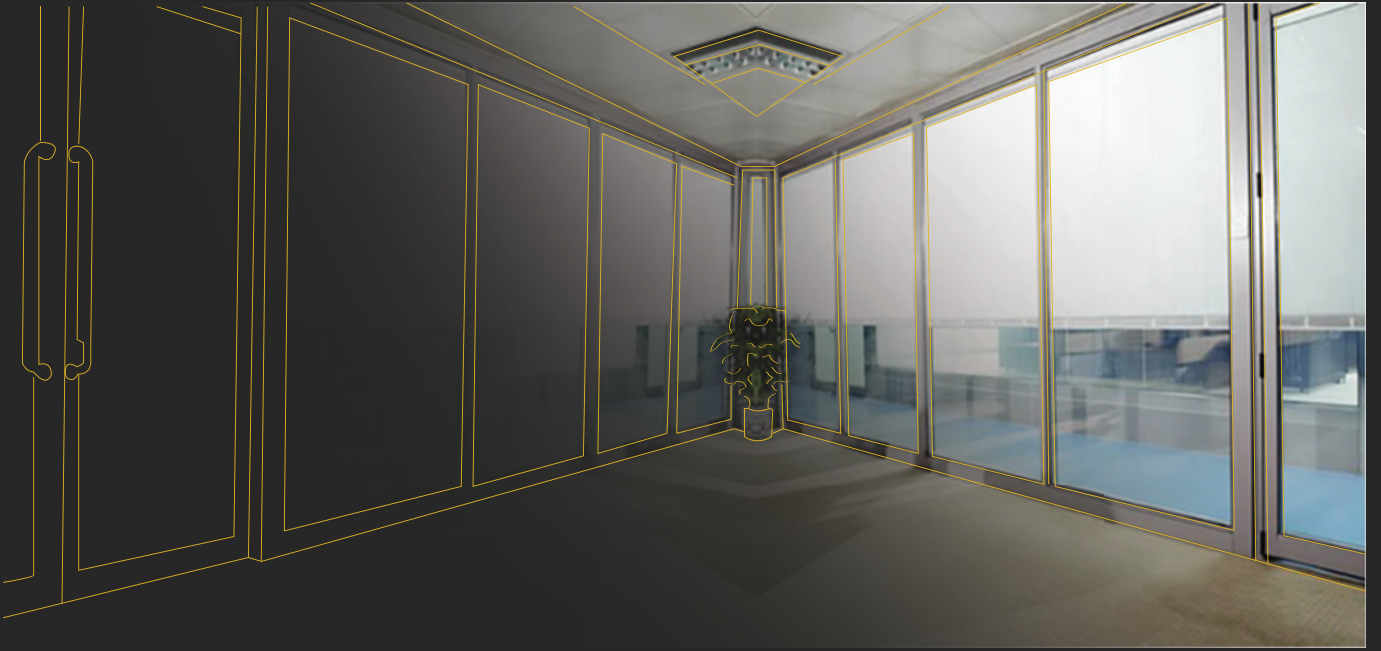
 [info@noraluminyum.com.tr](mailto:info@noraluminyum.com.tr)

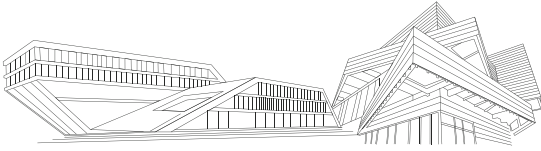
 Burhan Osb. Mah. 16. Cad. No: 3  
Akdeniz/MERSİN



# ALDOKS SERİSİ

## ALDOX SERIES

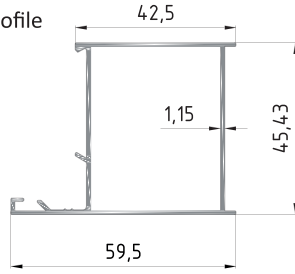




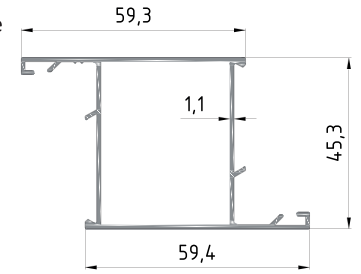
## ALDOKS SERİSİ- ALDOX SERIES



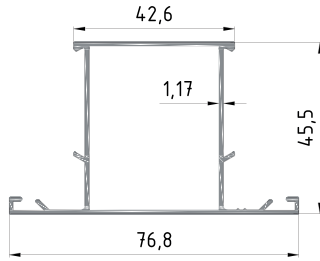
- 41-1988
- Kasa Profili / Frame Profile
- 0.623 kg/m



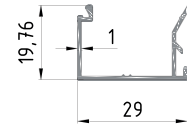
- 41-1989
- Kanat Profili / Sash Profile
- 0.718 kg/m



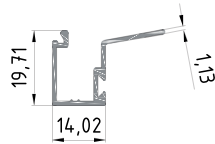
- 41-1990
- Orta Kayıt Profili / Transom Profile
- 0.718 kg/m



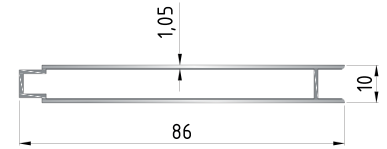
- 41-1948
- Tek Cam Çıta / Single Glazing Beam
- 0.210 kg/m



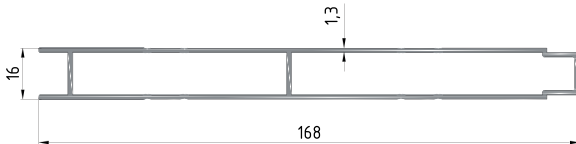
- 41-1949
- İki Cam Çıta / Double Glazing Beam
- 0.234 kg/m



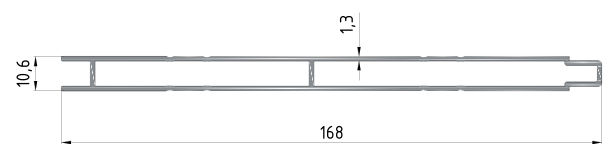
- 41-1954
- Lambiri Profili / Wainscot Profile
- 0.534 kg/m



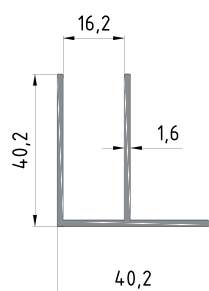
- 41-10303
- Lambiri Profili / Wainscot Profile
- 1.347 kg/m



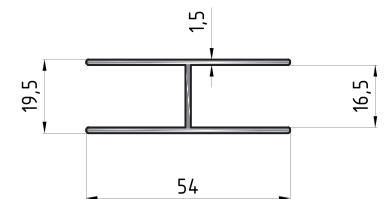
- 41-10290
- Lambiri Profili / Wainscot Profile
- 1.281 kg/m



- 10-10089
- F Profil / F Profile
- 0.508 kg/m



- 10-10090
- H Profil / H Profile
- 0.505 kg/m



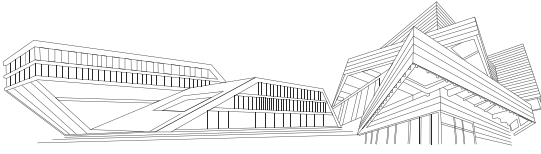




# C60 SERİSİ

## C60 SERIES

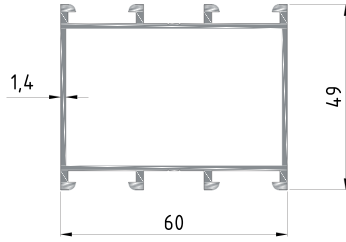




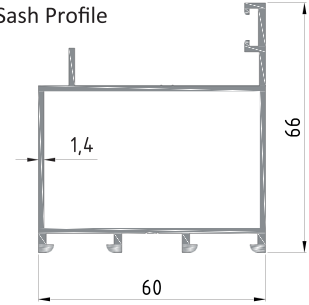
## C60 SERİSİ - C60 SERIES



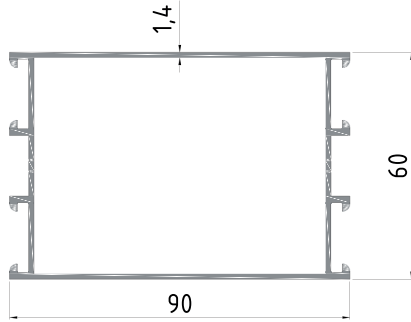
- 11-2268
- Dar Kasa Profili / Narrow Frame Profile
- 1.016 kg/m



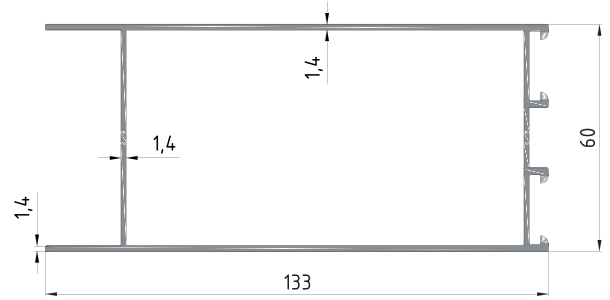
- 11-2269
- Kanat Profili / Sash Profile
- 1.060 kg/m



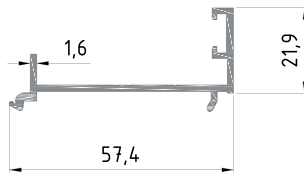
- 11-2270
- Geniş Kasa Profili / Wide Frame Profile
- 1.316 kg/m



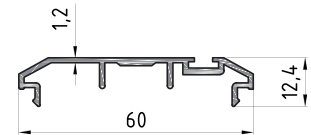
- 11-2270
- Etek Profili / Plinth Profile
- 1.542 kg/m



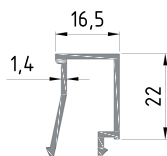
- 11-2256
- Kanat Adaptörü / Sash Adaptor
- 0.462 kg/m



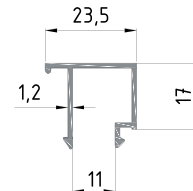
- 11-2261
- Çarpma Kapı Adaptörü / Swinging Door Adaptor
- 0.401 kg/m



- 11-2254
- Isıcam Çıtası / Double Glazing Strip
- 0.281 kg/m

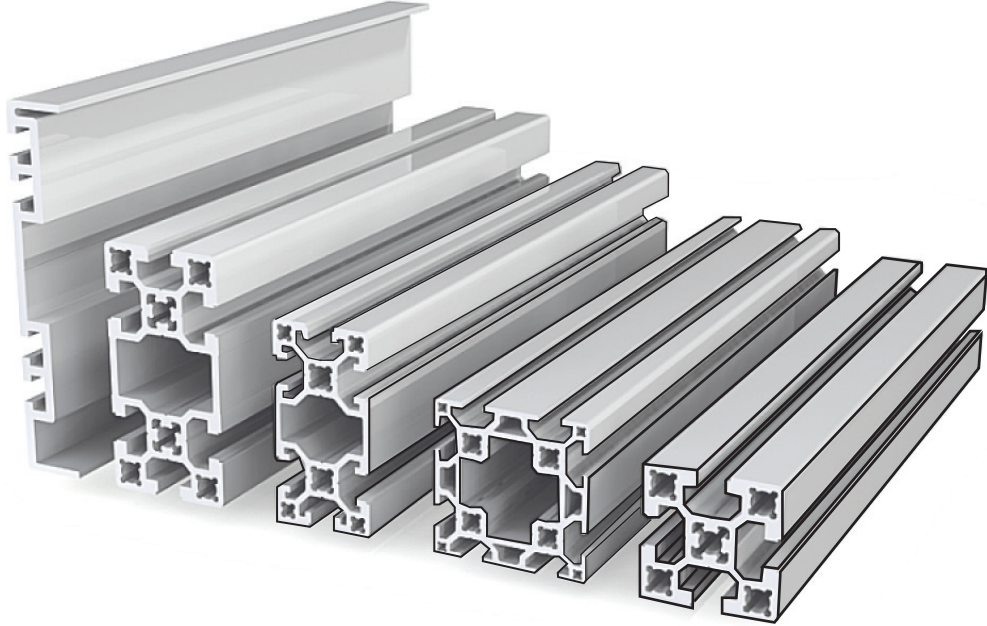


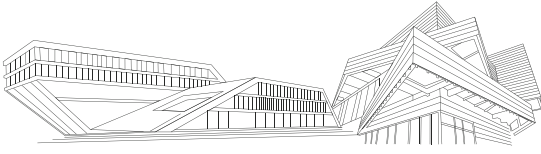
- 11-2255
- Tek Cam Çıtası / Single Glazing Strip
- 0.268 kg/m



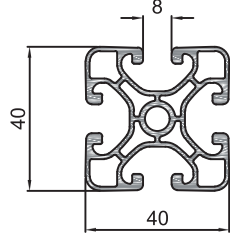
## SİGMA PROFİLLERİ

### SİGMA PROFILES

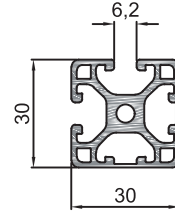




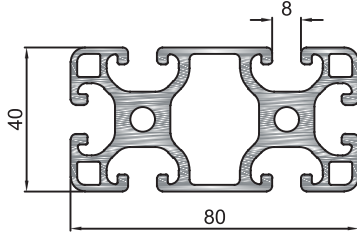
- 31-10366
- 40x40 Sigma Profili / 40x40 Sigma Profile
- 1.292 kg/m



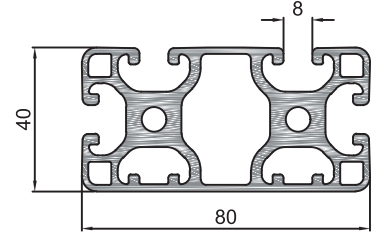
- 31-10374
- 30x30 Sigma Profili / 30x30 Sigma Profile
- 0.989 kg/m



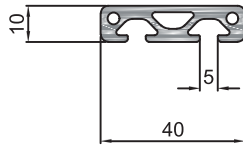
- 31-10368
- 80x40 Sigma Profili / 80x40 Sigma Profile
- 3.176 kg/m



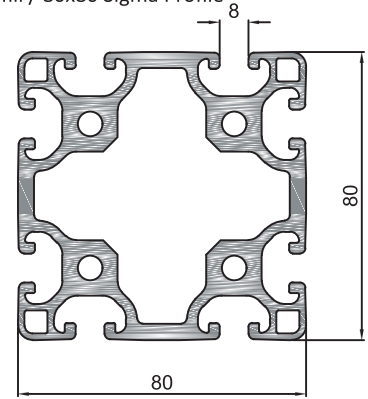
- 31-10375
- 80x40 Sigma Profili / 80x40 Sigma Profile
- 3.239 kg/m



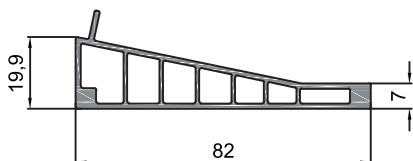
- 31-10373
- 40x10 Sigma Profili / 40x10 Sigma Profile
- 0.651 kg/m



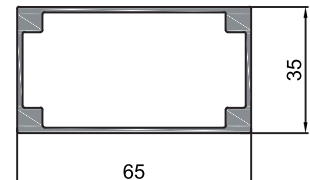
- 31-10367
- 80x80 Sigma Profili / 80x80 Sigma Profile
- 5.389 kg/m



- 31-10539
- Sigma Profili / Sigma Profile
- 1.014 kg/m



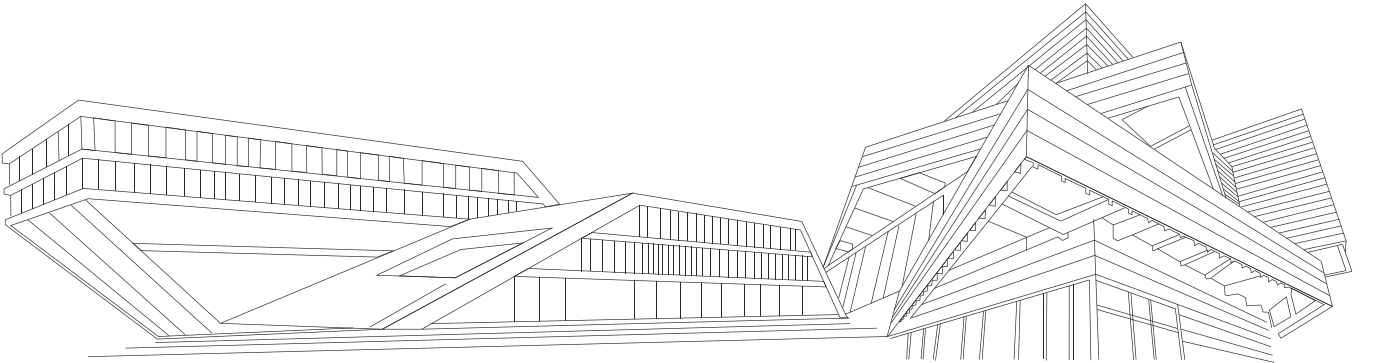
- 31-10540
- Sigma Profili / Sigma Profile
- 1.119 kg/m





# STANDART PROFİL

## STANDARD PROFIL



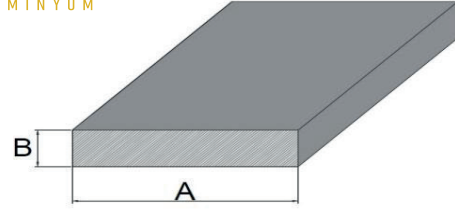
+90 549 502 03 30  
+90 552 863 37 13



info@noraluminyum.com.tr



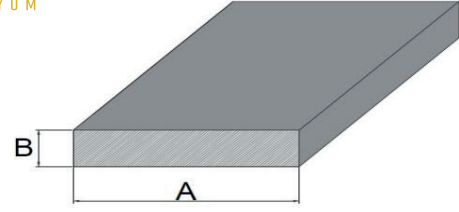
Burhan Osb. Mah. 16. Cad. No: 3  
Akdeniz/MERSİN



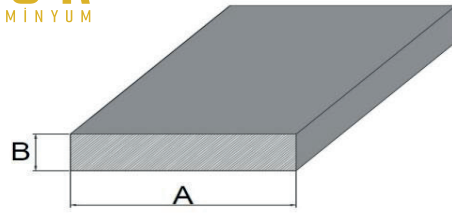
## LAMA PROFİLLERİ (FLAT BAR PROFILES)

No	Kalıp Kodu (Mold No)	Profil Ölçüler (Profile Dimensions)		Ağırlık (Weight) (kg/m)
		A (mm)	B (mm)	
1	1630	20	2	0,108
2	1388	20	3	0,163
3	1631	20	4	0,217
4	1270	20	5	0,271
5	1632	20	8	0,434
6	1389	20	10	0,542
7	1633	20	15	0,813
8	1593	25	3	0,203
9	1390	25	5	0,339
10	1634	25	8	0,542
11	1635	25	15	1,017
12	1405	30	2	0,163
13	1392	30	3	0,244
14	1636	30	4	0,325
15	1393	30	5	0,407
16	1637	30	6	0,488
17	1394	30	8	0,651
18	1395	30	10	0,813
19	1594	30	12	0,976
20	1275	30	15	1,22
21	1276	30	20	1,627
22	1638	35	20	2,44
23	1407	40	2	0,217
24	1266	40	3	0,325
25	1396	40	4	0,434
26	1397	40	5	0,542
27	1255	40	6	0,65
28	1398	40	8	0,868
29	1399	40	10	1,084
30	1639	40	12	1,301
31	1409	40	15	1,627
32	1410	40	20	2,169
33	1640	40	25	2,711
34	1641	40	30	3,253
35	1408	50	2	0,271
36	1114	50	3	0,407
37	1411	50	4	0,542
38	1412	50	5	0,678
39	1413	50	6	0,813

## LAMA PROFİLLERİ (FLAT BAR PROFILES)



No	Kalıp Kodu (Mold No)	Profil Ölçüleri (Profile Dimensions)		Ağırlık (Weight) (kg/m)
		A (mm)	B (mm)	
40	1414	50	8	1,084
41	1415	50	10	1,356
42	1655	50	12	1,627
43	1416	50	15	2,033
44	1417	50	20	2,711
45	1656	50	25	3,389
46	1657	50	30	4,067
47	1658	50	40	5,422
48	1588	60	2	0,325
49	1118	60	3	0,488
50	1419	60	4	0,651
51	1191	60	5	0,813
52	1420	60	6	0,976
53	1421	60	8	1,301
54	1256	60	10	1,63
55	1254	60	12	1,95
56	1422	60	15	2,44
57	1423	60	20	3,253
58	1659	60	25	4,067
59	1660	60	30	4,88
60	1277	60	40	6,506
61	1683	70	3	0,57
62	1598	70	4	0,759
63	1265	70	5	0,949
64	1627	70	6	1,139
65	1264	70	8	1,518
66	1289	70	10	1,898
67	1253	70	12	2,277
68	1723	70	15	2,846
69	1661	70	20	3,795
70	1662	70	25	4,744
71	1663	70	30	5,693
72	1664	70	40	7,591
73	1251	80	2	0,434
74	1665	80	3	0,203
75	1666	80	4	0,868
76	1263	80	5	1,084
77	1667	80	6	1,301

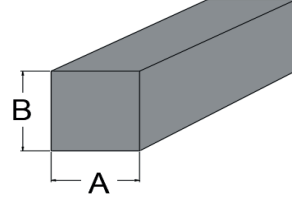


## LAMA PROFİLLERİ (FLAT BAR PROFILES)

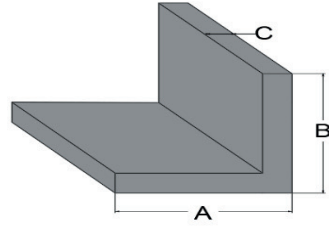
No	Kalıp Kodu (Mold No)	Profil Ölçüler (Profile Dimensions)		Ağırlık (Weight) (kg/m)
		A (mm)	B (mm)	
78	1262	80	8	1,735
79	1261	80	10	2,169
80	1252	80	12	2,6
81	1432	80	15	3,253
82	1433	80	20	4,338
83	1668	80	25	5,422
84	1669	80	30	6,506
85	1300	80	40	8,675
86	1731	90	16	3,902
87	1670	100	3	0,813
88	1671	100	4	1,084
89	1192	100	5	1,355
90	1301	100	6	1,627
91	1434	100	8	2,169
92	1193	100	10	2,711
93	1672	100	12	3,253
94	1435	100	15	4,067
95	1436	100	20	5,422
96	1673	100	25	6,778
97	1674	100	30	8,133
98	1675	100	40	10,844
99	1437	120	5	1,627
100	1676	120	8	2,603
101	1438	120	10	3,253
102	1677	120	15	4,88
103	1439	120	20	6,506
104	1728	140	15	5,693
105	1440	150	5	2,033
106	1678	150	8	3,253
107	1441	150	10	4,067
108	1679	150	12	4,88
109	1302	150	15	6,1
110	1680	150	20	8,133
111	1303	200	5	2,711
112	1681	200	8	4,338
113	1442	200	10	5,422
114	1682	200	15	8,133
115	1443	250	10	6,778
116	1728	140	15	5,693
117	1683	70	3	0,57
118	1723	70	15	2,846



## KARE ÇUBUK PROFİLLERİ (SQUARE BAR PROFILES)

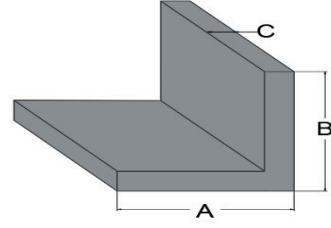


No	Kalıp Kodu (Mold No)	Profil Ölçüler (Profile Dimensions)		Ağırlık (Weight) (kg/m)
		A (mm)	A (mm)	
1	1701	8	8	0,174
2	1386	10	10	0,271
3	1387	15	15	0,61
4	1188	20	20	1,084
5	1391	25	25	1,694
6	1189	30	30	2,44
7	1190	40	40	4,338
8	1418	50	50	6,778
9	1424	60	60	9,76



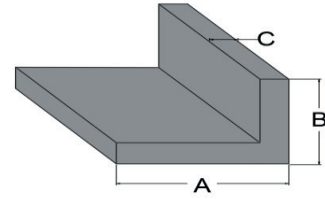
## İKİZKENAR KÖŞEBENT PROFİLLER (ISOSCELES ANGLE PROFILES)

No	Kalıp Kodu (Mold No)	Profil Ölçüler (Profile Dimensions)			Ağırlık (Weight) (kg/m)
		A (mm)	B (mm)	C (mm)	
1	1702	10	10	2	0,271
2	1194	15	15	2	0,152
3	2052	20	20	1,2	0,126
4	1332	20	20	2	0,206
5	1333	20	20	3	0,301
6	1334	25	25	2	0,26
7	1335	25	25	3	0,382
8	1703	25	25	4	0,499
9	1822	30	30	1	0,16
10	1148	30	30	2	0,314
11	1336	30	30	3	0,464
12	1195	30	30	4	0,607
13	1600	30	30	5	0,746
14	1196	35	35	2	0,369
15	1601	35	35	3	0,545
16	1150	40	40	2	0,423
17	1337	40	40	3	0,626
18	1338	40	40	4	0,824
19	1339	40	40	5	1,017
20	1340	45	45	2	0,477
21	1704	45	45	5	1,152
22	1341	50	50	2	0,531
23	1197	50	50	3	0,789
24	1342	50	50	4	1,041
25	1343	50	50	5	1,288
26	1603	50	50	6	1,529
27	1604	50	50	8	1,995
28	1705	50	50	10	2,44
29	1344	60	60	2	0,64
30	1345	60	60	3	0,952
31	1346	60	60	4	1,258
32	1347	60	60	5	1,559
33	1348	60	60	6	1,854
34	1605	60	60	8	2,429
35	1606	60	60	10	2,982
36	1278	80	80	3	1,277
37	1198	80	80	5	2,101
38	1199	80	80	8	3,297
39	1706	80	80	10	4,067



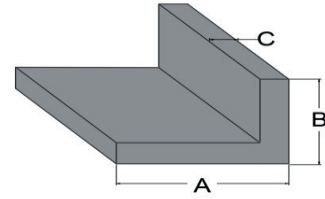
## İKİZKENAR KÖŞEBENT PROFİLLER (ISOSCELES ANGLE PROFILES)

No	Kalıp Kodu (Mold No)	Profil Ölçüler (Profile Dimensions)			Ağırlık (Weight) (kg/m)
		A (mm)	B (mm)	C (mm)	
40	1707	90	90	10	4,609
41	1349	100	100	10	5,151
42	1283	100	100	3	1,602
43	1284	100	100	4	2,125
44	1285	100	100	5	2,643
45	1286	100	100	6	3,156
46	1287	100	100	8	4,164



## KENARLARI EŞİT OLMAYAN KÖŞEBENT PROFİLLER (UNEQUAL ANGLE PROFILES)

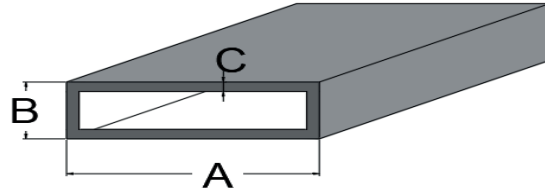
No	Kalıp Kodu (Mold No)	Profil Ölçüler (Profile Dimensions)			Ağırlık (Weight) (kg/m)
		A (mm)	B (mm)	C (mm)	
1	1591	20	10	2	0,152
2	1590	20	15	2	0,179
3	1607	25	20	2	0,152
4	1592	30	10	2	0,136
5	1200	30	15	2	0,233
6	1142	30	20	2	0,26
7	1351	30	20	3	0,382
8	1143	40	10	2	0,26
9	2055	40	20	1,1	0,18
10	122	40	20	2	0,314
11	1352	40	20	3	0,464
12	1353	40	30	2	0,369
13	1354	40	30	3	0,545
14	1267	50	20	2	0,369
15	1608	50	20	3	0,545
16	1202	50	30	2	0,423
17	1355	50	30	3	0,626
18	1356	50	30	5	1,017
19	1734	50	80	3	1,032
20	1735	50	160	3	1,683
21	1357	60	20	2	0,423
22	1613	60	20	3	0,626
23	1359	60	30	2	0,477
24	1360	60	30	3	0,708
25	1361	60	40	2	0,531
26	1362	60	40	3	0,789
27	1363	60	40	4	1,041
28	1364	60	40	5	1,288
29	1269	70	20	2	0,477
30	1365	80	20	2	0,531
31	1203	80	30	3	0,87
32	1366	80	40	2	0,64
33	1367	80	40	3	0,952
34	1368	80	40	4	1,258
35	1304	80	40	5	1,559
36	1369	80	40	6	1,854
37	1370	80	50	5	1,694



## KENARLARI EŞİT OLMAYAN KÖŞEBENT PROFİLLER (UNEQUAL ANGLE PROFILES)

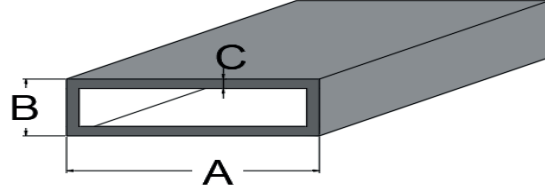
No	Kalıp Kodu (Mold No)	Profil Ölçüler (Profile Dimensions)			Ağırlık (Weight) (kg/m)
		A (mm)	B (mm)	C (mm)	
38	1371	100	20	2	0,64
39	1614	100	30	3	1,033
40	1615	100	40	3	1,114
41	1616	100	40	4	1,475
42	1204	100	50	3	1,195
43	1372	100	50	5	1,965
44	1373	100	50	6	2,342
45	1617	100	50	8	3,08
46	1374	100	50	10	3,795
47	1375	100	60	6	2,505
48	1376	120	50	5	2,237
49	1377	120	60	6	2,83
50	1378	120	60	8	3,73
51	1379	120	80	8	4,164
52	1380	120	80	10	5,151
53	1618	130	30	3	1,277
54	1381	150	50	4	2,125
55	1619	150	50	5	2,643
56	1383	150	75	8	4,706
57	1305	150	100	5	3,321
58	1384	150	100	10	6,506
59	1385	200	100	10	7,862

## DİKDÖRTGEN KUTU PROFİLLER (RECTANGULAR TUBE PROFILES)



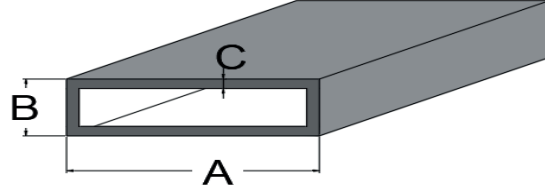
No	Kalıp Kodu (Mold No)	Profil Ölçüler (Profile Dimensions)			Ağırlık (Weight) (kg/m)
		A (mm)	B (mm)	C (mm)	
1	1281	25	15	2	0,39
2	1554	30	10	2	0,39
3	1555	30	15	2	0,445
4	1464	30	20	2	0,499
5	1400	30	25	2	0,553
6	1556	40	15	2	0,553
7	1645	40	20	1,3	0,405
8	1729	40	20	1,5	0,463
9	1465	40	20	2	0,607
10	1466	40	20	3	0,878
11	1559	40	25	2	0,661
12	1467	40	30	2	0,716
13	1560	40	30	3	1,041
14	1215	50	15	2	0,661
15	1216	50	25	2	0,77
16	1561	50	25	3	1,122
17	1166	50	20	2	0,716
18	1282	50	20	3	1,041
19	1646	50	30	2	0,824
20	1468	50	30	3	1,204
21	1309	50	40	2	0,933
22	1566	50	40	3	1,366
23	1469	60	20	2	0,824
24	1217	60	20	3	1,204
25	1470	60	30	2	0,933
26	1471	60	30	3	1,366
27	1609	60	40	1,5	0,789
28	1649	60	40	2	1,041
29	1472	60	40	3	1,529
30	1473	60	40	4	1,995
31	1310	60	50	3	1,692
32	1218	70	20	2	0,933
33	1567	70	40	3	1,692
34	1474	80	20	2	1,041
35	1126	80	30	2	1,149
36	1562	80	30	3	1,692
37	1602	80	40	1,6	1,013
38	1475	80	40	2	1,258

## DİKDÖRTGEN KUTU PROFİLLER (RECTANGULAR TUBE PROFILES)



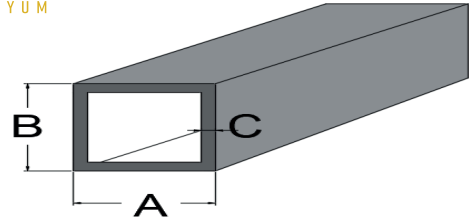
No	Kalıp Kodu (Mold No)	Profil Ölçüler (Profile Dimensions)			Ağırlık (Weight) (kg/m)
		A (mm)	B (mm)	C (mm)	
39	1476	80	40	3	1,854
40	1477	80	40	4	2,429
41	1572	80	50	2	1,366
42	1573	80	50	3	2,017
43	1574	80	50	4	2,646
44	1478	80	60	3	2,18
45	1479	80	60	4	2,863
46	1549	80	60	6	4,813
47	1480	100	20	2	1,258
48	1219	100	25	2	1,312
49	1564	100	30	2	1,366
50	1563	100	30	3	2,017
51	1568	100	40	2	1,475
52	1220	100	40	3	2,18
53	1569	100	40	4	2,863
54	1481	100	50	2	1,583
55	1482	100	50	3	2,342
56	1483	100	50	4	3,08
57	1484	100	50	5	3,795
58	1576	100	60	3	2,505
59	1577	100	60	4	3,297
60	1579	100	80	3	2,83
61	1580	100	80	4	3,73
62	1485	120	20	2	1,475
63	1565	120	30	2	1,583
64	1586	120	30	3	2,342
65	1570	120	40	2	1,692
66	1571	120	40	4	3,297
67	1221	120	50	3	2,668
68	1222	120	50	4	3,514
69	1486	120	60	3	2,83
70	1487	120	60	4	3,73
71	1223	120	80	3	3,156
72	1581	120	80	4	4,598
73	1311	140	40	4	3,73
74	1578	140	60	4	4,164
75	1224	140	80	4	4,598

## DİKDÖRTGEN KUTU PROFİLLER (RECTANGULAR TUBE PROFILES)



No	Kalıp Kodu (Mold No)	Profil Ölçüler (Profile Dimensions)			Ağırlık (Weight) (kg/m)
		A (mm)	B (mm)	C (mm)	
76	1557	150	20	2	1,8
77	1587	150	40	4	3,947
78	1488	150	50	2	2,125
79	1225	150	50	3	3,156
80	1489	150	50	4	4,164
81	1312	150	50	5	5,151
82	1582	150	80	4	4,815
83	1490	150	100	3	3,969
84	1491	150	100	4	5,248
85	1492	160	80	4	5,032
86	1313	180	40	4	4,598
87	1724	180	60	4	5,032
88	1314	180	80	4	5,465
89	1725	200	40	3	3,806
90	1493	200	50	4	5,248
91	1583	200	80	4	5,899
92	1494	200	100	4	6,333

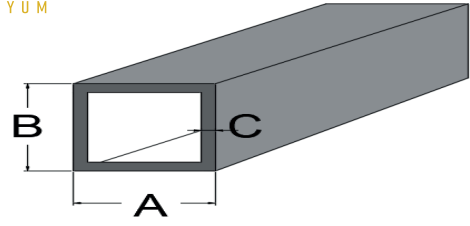




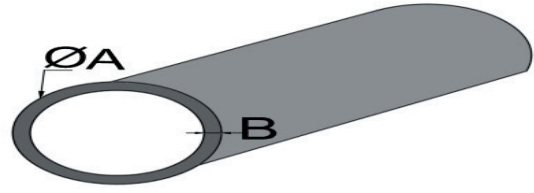
## KARE KUTU PROFİLLER (SQUARE TUBE PROFILES)

No	Kalıp Kodu (Mold No)	Profil Ölçüler (Profile Dimensions)			Ağırlık (Weight) (kg/m)
		A (mm)	B (mm)	C (mm)	
1	1722	15	15	1	0,152
2	1535	15	15	1,5	0,22
3	1536	15	15	2	0,282
4	1163	20	20	1,5	0,301
5	1444	20	20	2	0,39
6	1308	20	20	3	0,553
7	1537	25	25	1,5	0,382
8	1445	25	25	2	0,499
9	1538	25	25	3	0,716
10	1400	30	25	2	0,553
11	2065	30	30	1,5	0,464
12	1446	30	30	2	0,607
13	1447	30	30	3	0,878
14	1539	30	30	4	1,128
15	1448	35	35	2	0,716
16	1540	35	35	3	1,041
17	1644	40	40	1,3	0,546
18	1165	40	40	2	0,824
19	1449	40	40	3	1,204
20	1450	40	40	4	1,562
21	1542	40	40	5	1,898
22	1543	45	45	2	0,933
23	1648	50	50	2	1,041
24	1212	50	50	3	1,529
25	1451	50	50	4	1,995
26	1452	50	50	5	2,44
27	1453	60	60	2	1,258
28	1454	60	60	3	1,854
29	1455	60	60	4	2,429
30	1544	60	60	5	2,982
31	1545	70	70	2	1,475
32	1546	70	70	3	2,18
33	1456	70	70	4	2,863
34	1547	80	80	2	1,692
35	1457	80	80	3	2,505
36	1213	80	80	4	3,296
37	1548	80	80	5	4,067
38	1549	80	80	6	4,815

## KARE KUTU PROFİLLER (SQUARE TUBE PROFILES)

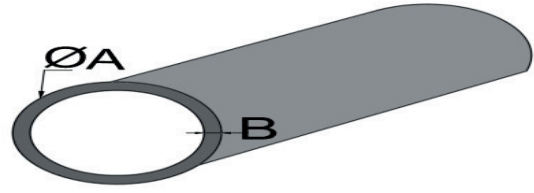


No	Kalıp Kodu (Mold No)	Profil Ölçüler (Profile Dimensions)			Ağırlık (Weight) (kg/m)
		A (mm)	B (mm)	C (mm)	
39	1280	90	90	4	3,73
40	1595	99	99	2	2,104
41	1214	100	100	2	2,125
42	1458	100	100	3	3,156
43	1459	100	100	4	4,164
44	1460	100	100	5	5,151
45	1550	100	100	10	9,76
46	1551	120	120	2,5	3,185
47	1461	120	120	4	5,032
48	1552	120	120	5	6,235
49	1754	150	150	2	3,21
50	1462	150	150	3	4,782
51	1463	150	150	5	7,862
52	1724	180	60	4	5,032
53	1725	200	40	3	3,809



## BORU PROFİLLER (ROUND TUBE PROFILES)

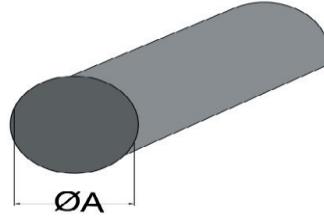
No	Kalıp Kodu (Mold No)	Profil Ölçüler (Profile Dimensions)		Ağırlık (Weight) (kg/m)
		Q A(mm)	B (mm)	
1	2898	10	1	0,077
2	1708	15	2	0,221
3	2770	16	1,5	0,185
4	2760	16	2	0,238
5	1774	20	1,5	0,236
6	1201	20	2	0,306
7	1710	20	3	0,434
8	1208	25	1,5	0,3
9	1207	25	2	0,392
10	1226	25	3	0,562
11	1227	30	1,5	0,364
12	2759	30	2	0,477
13	1228	30	3	0,69
14	1229	30	4	0,885
15	1230	30	5	1,064
16	1209	32	2	0,511
17	2758	35	2	0,562
18	1231	35	3	0,817
19	1712	35	4	1,056
20	1713	35	5	1,277
21	1306	38	2	0,613
22	1714	40	1,5	0,492
23	2756	40	2	0,647
24	1232	40	3	0,945
25	1233	40	4	1,226
26	1234	40	5	1,49
27	1715	40	10	2,554
28	1210	42	3	0,996
29	1767	44,5	8,75	2,664
30	1235	45	2	0,732
40	1307	48	2	0,783
41	1236	48	3	1,149
42	1237	48	4	1,498
43	2751	50	1,5	0,62
44	2761	50	2	0,818
45	1238	50	3	1,2
46	1239	50	4	1,566
47	1240	50	5	1,915



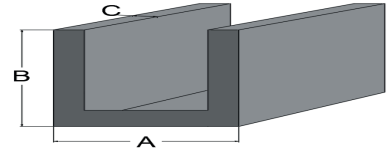
## BORU PROFİLLER (ROUND TUBE PROFILES)

No	Kalıp Kodu (Mold No)	Profil Ölçüler (Profile Dimensions)		Ağırlık (Weight) (kg/m)
		Q A(mm)	B (mm)	
48	1241	60	2	0,987
49	1242	60	3	1,456
50	1243	60	4	1,907
51	1244	60	5	2,341
52	1533	60	10	4,256
53	1732	60	11,25	4,669
54	1736	60	37,2	4,719
55	1741	60	37,5	4,671
56	1245	65	2	1,073
57	1716	70	2	1,158
58	1246	70	3	1,711
59	1247	70	5	2,767
60	1717	75	5	2,979
61	1248	80	2	1,328
62	1249	80	3	1,966
63	1317	80	5	3,192
64	1318	90	5	3,618
65	1319	100	2	1,668
66	1211	100	3	2,477
67	1718	100	4	3,269
68	1320	100	5	4,043
69	1534	100	10	7,661
70	1719	110	5	4,469
71	1730	110	10	8,514
72	1720	120	3	2,988
73	1322	120	5	4,895
74	1721	140	5	5,746
75	1324	150	3	3,754
76	1325	150	5	6,172

## BORU ÇUBUK PROFİLLER (ROUND BAR PROFILES)



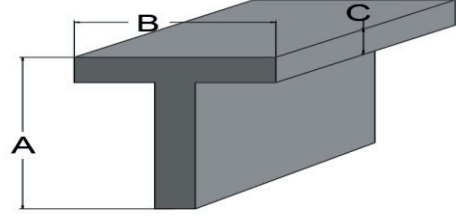
No	Kalıp Kodu (Mold No)	Profil Ölçüler (Profile Dimensions)	
		Q	A(mm)
1	1753	7,62	0,124
2	1737	7,9	0,133
3	1629	8	0,14
4	1402	10	0,21
5	1403	12	0,31
6	1326	15	0,48
7	1406	16	0,545
8	1431	20	0,852
9	1186	25	1,33
10	1327	30	1,92
11	1328	35	2,61
12	1329	40	3,41
13	1330	45	4,31
14	1187	50	5,32
15	1331	60	7,66



## U PROFİLLER (U PROFILES)

No	Kalıp Kodu (Mold No)	Profil Ölçüler (Profile Dimensions)			Ağırlık (Weight) (kg/m)
		A (mm)	B (mm)	C (mm)	
1	1501	15	15	2	0,222
2	1502	20	20	2	0,304
3	1503	30	20	2	0,412
4	1504	40	20	2	0,521
5	1589	23	23	1,5	0,268
6	1505	25	25	2	0,385
7	1506	25	25	3	0,561
8	1507	20	30	2	0,358
9	1508	30	30	2	0,466
10	1260	30	30	3	0,683
11	1509	35	35	2	0,548
12	1510	35	35	3	0,805
13	1511	20	40	2	0,412
14	1620	20	40	3	0,602
15	1512	30	40	3	0,765
16	1100	40	40	2	0,629
17	1513	40	40	3	0,927
18	1514	40	40	4	1,215
19	1515	20	50	2	0,466
20	1516	30	50	3	0,846
21	1517	30	50	4	1,106
22	1518	40	50	4	1,323
23	1519	50	50	3	1,171
24	1520	50	50	4	1,54
25	1521	50	50	5	1,898
26	1522	30	60	3	0,927
27	1523	40	60	3	1,09
28	1524	40	60	4	1,431
29	1525	40	60	5	1,762
30	1526	60	60	3	1,415
31	1527	60	60	4	1,865
32	1528	60	60	5	2,304
33	1529	30	80	3	1,09
34	1530	40	80	3	1,252
35	1531	40	80	4	1,648
36	1532	50	80	5	2,304
37	1621	40	100	3	1,415
38	1622	50	100	3	1,578
39	1205	50	100	5	2,575
40	1279	55	65	2,5	1,152
41	1597	60	112	4	2,862
42	1726	60	140	7	4,668

## T PROFİLLER (T PROFILES)



No	Kalıp Kodu (Mold No)	Profil Ölçüler (Profile Dimensions)			Ağırlık (Weight) (kg/m)
		A (mm)	B (mm)	C (mm)	
1	1623	30	30	2	0,31
2	1624	30	30	3	0,49
3	1625	35	35	3	0,55
4	1206	40	40	3	0,63
5	1495	40	40	4	0,82
6	1497	50	50	5	1,29
7	1626	60	60	4	1,25
8	1733	80	50	2	0,68

